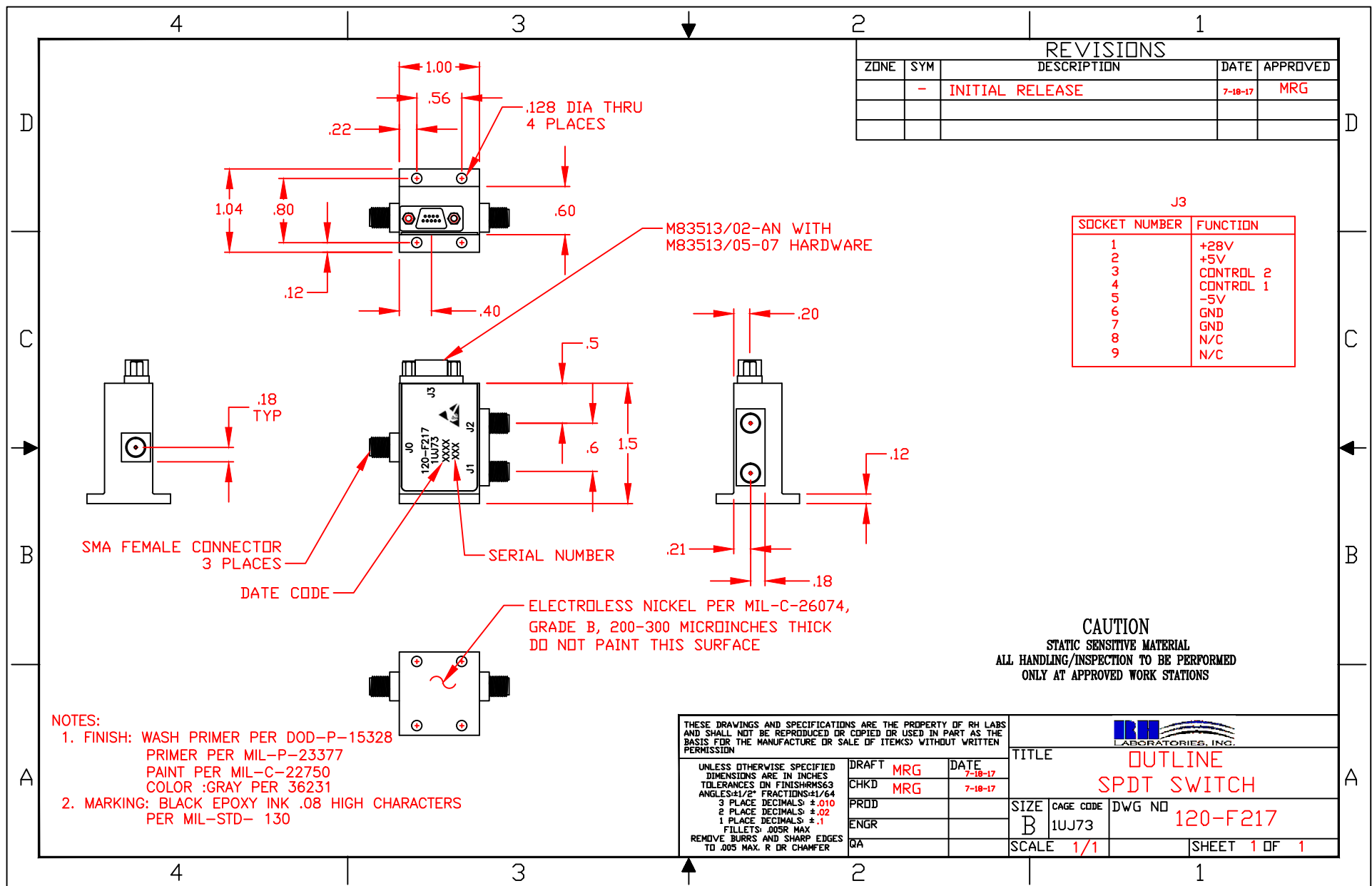


| REVISIONS |     |                 |         |          |
|-----------|-----|-----------------|---------|----------|
| ZONE      | SYM | DESCRIPTION     | DATE    | APPROVED |
|           | -   | INITIAL RELEASE | 7-18-17 | MRG      |
|           |     |                 |         |          |
|           |     |                 |         |          |

J3

| SOCKET NUMBER | FUNCTION  |
|---------------|-----------|
| 1             | +28V      |
| 2             | +5V       |
| 3             | CONTROL 2 |
| 4             | CONTROL 1 |
| 5             | -5V       |
| 6             | GND       |
| 7             | GND       |
| 8             | N/C       |
| 9             | N/C       |



- NOTES:
- FINISH: WASH PRIMER PER DOD-P-15328  
PRIMER PER MIL-P-23377  
PAINT PER MIL-C-22750  
COLOR :GRAY PER 36231
  - MARKING: BLACK EPOXY INK .08 HIGH CHARACTERS  
PER MIL-STD- 130

|   |           |                     |       |     |      |         |
|---|-----------|---------------------|-------|-----|------|---------|
| THESE DRAWINGS AND SPECIFICATIONS ARE THE PROPERTY OF RH LABS AND SHALL NOT BE REPRODUCED OR COPIED OR USED IN PART AS THE BASIS FOR THE MANUFACTURE OR SALE OF ITEMS WITHOUT WRITTEN PERMISSION                            |           |                     |       |     |      |         |
| UNLESS OTHERWISE SPECIFIED DIMENSIONS ARE IN INCHES TOLERANCES ON FINISHES: ±.010 3 PLACE DECIMALS ±.02 2 PLACE DECIMALS ±.1 1 PLACE DECIMALS ±.1 FILLETS: .005R MAX REMOVE BURRS AND SHARP EDGES TO .005 MAX. R OR CHAMFER |           |                     | DRAFT | MRG | DATE | 7-18-17 |
|   |           |                     | CHKD  | MRG | DATE | 7-18-17 |
|   |           |                     | PRDD  |     |      |         |
|   |           |                     | ENGR  |     |      |         |
|   |           |                     | QA    |     |      |         |
| TITLE   |           | OUTLINE SPDT SWITCH |       |     |      |         |
| SIZE  | CAGE CODE | DWG NO              |       |     |      |         |
| B   | 1UJ73     | 120-F217            |       |     |      |         |
| SCALE   | 1/1       | SHEET 1 OF 1        |       |     |      |         |