

STANDARD SWITCH CATALOG

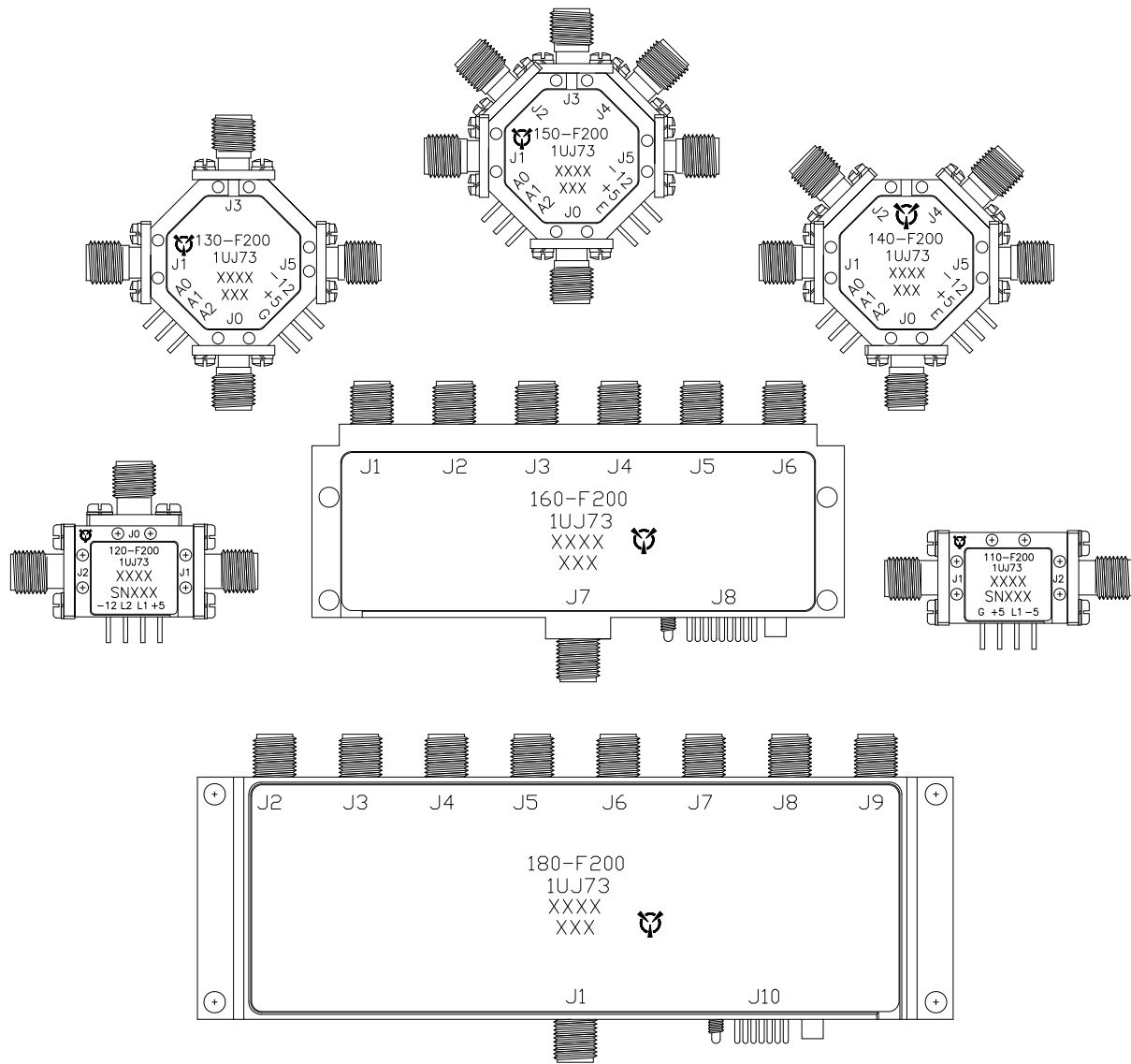
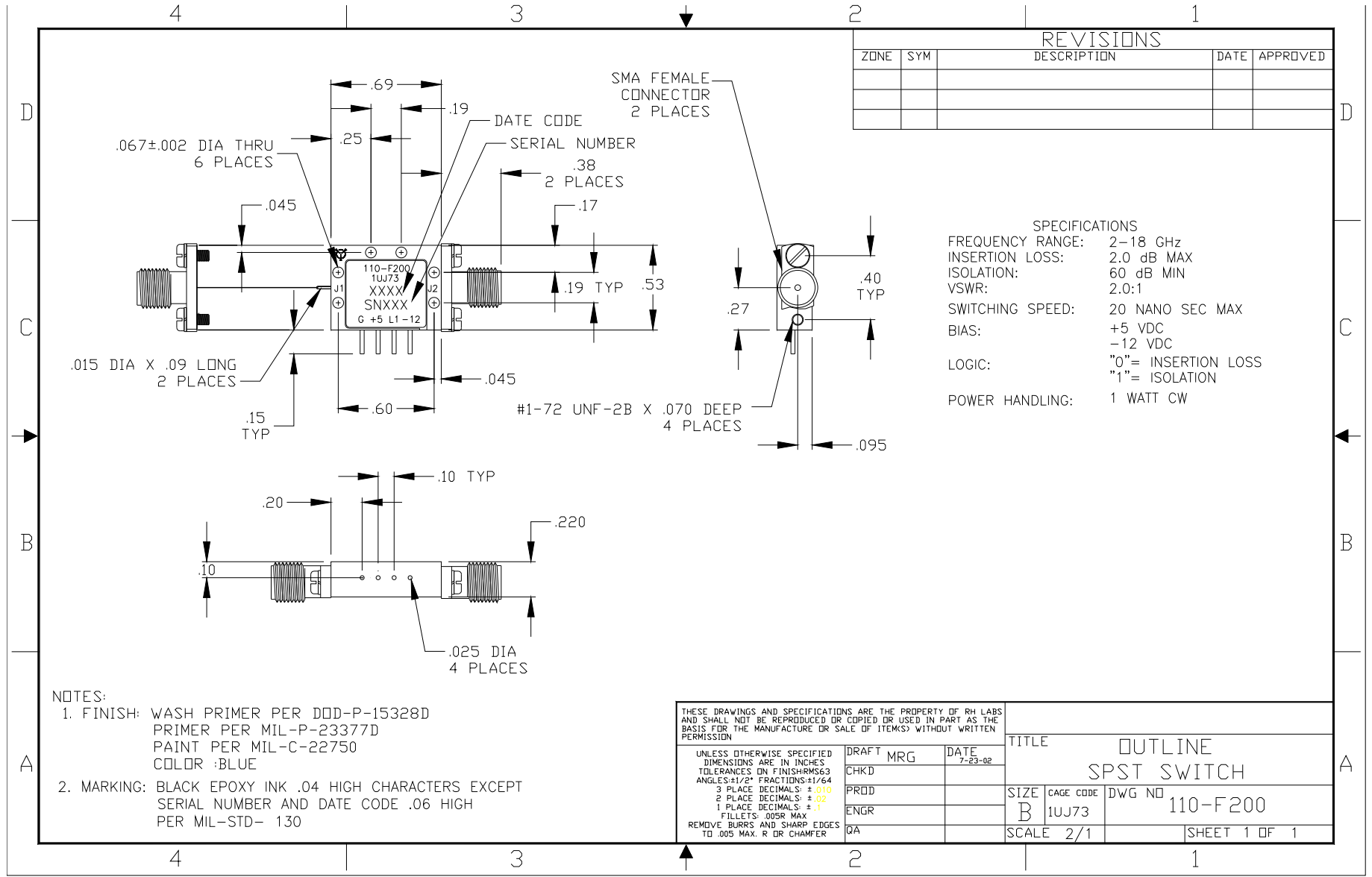


TABLE OF CONTENT

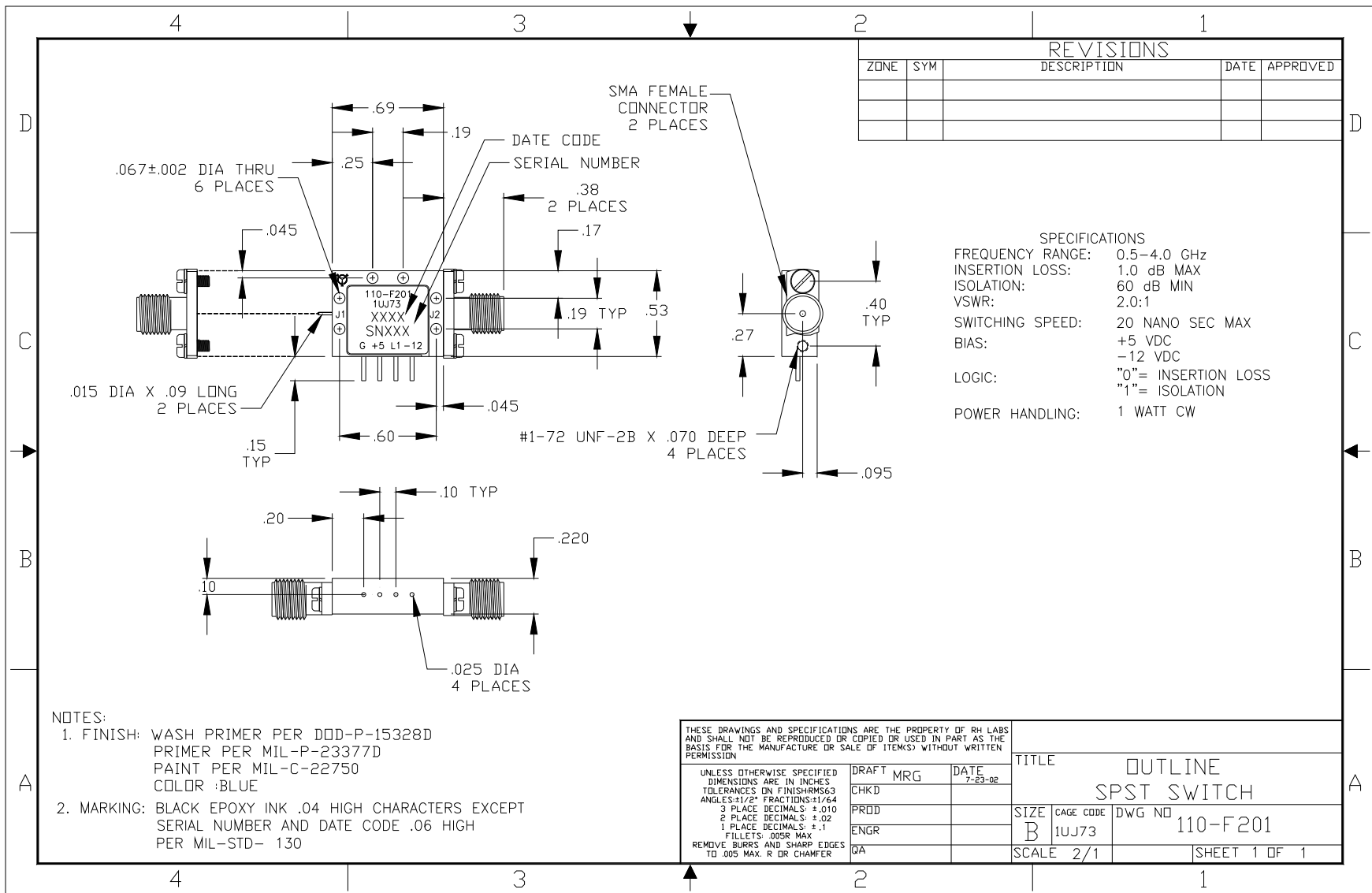
Page Number	Model Number	Function	Frequency Range	
4	110-F200	SPST	2-18 GHz	Low Loss
5	110-F201	SPST	0.5 – 4 GHz	Low Loss
6	110-F202	SPST	2-18 GHz	Absorptive
7	110-F203	SPST	0.5 – 4 GHz	Absorptive
8	120-F200	SPDT	2-18 GHz	Low Loss
9	120-F201	SPDT	0.5 – 4 GHz	Low Loss
10	120-F202	SPDT	2-18 GHz	Absorptive
11	120-F203	SPDT	0.5 – 4 GHz	Absorptive
12	130-F200	SP3T	2-18 GHz	Low Loss
13	130-F201	SP3T	0.5 – 4 GHz	Low Loss
14	130-F202	SP3T	2-18 GHz	Absorptive
15	130-F203	SP3T	0.5 – 4 GHz	Absorptive
16	140-F200	SP4T	2-18 GHz	Low Loss
17	140-F201	SP4T	0.5 – 4 GHz	Low Loss
18	140-F202	SP4T	2-18 GHz	Absorptive
19	140-F203	SP4T	0.5 – 4 GHz	Absorptive
20	150-F200	SP5T	2-18 GHz	Low Loss
21	150-F201	SP5T	0.5 – 4 GHz	Low Loss
22	150-F202	SP5T	2-18 GHz	Absorptive
23	150-F203	SP5T	0.5 – 4 GHz	Absorptive
24	160-F200	SP6T	2-18 GHz	Absorptive
25	180-F200	SP8T	0.5-18 GHz	Absorptive

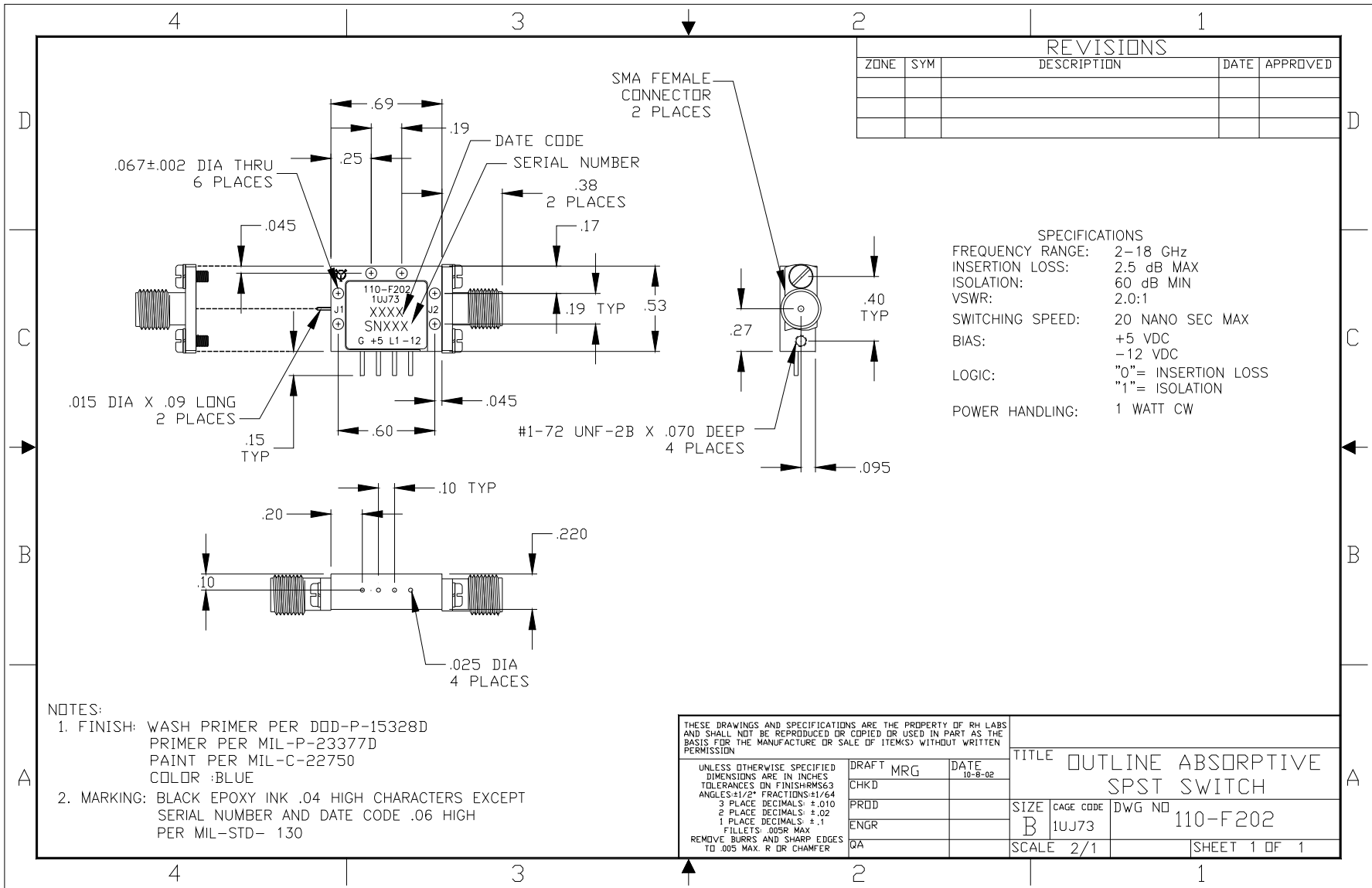


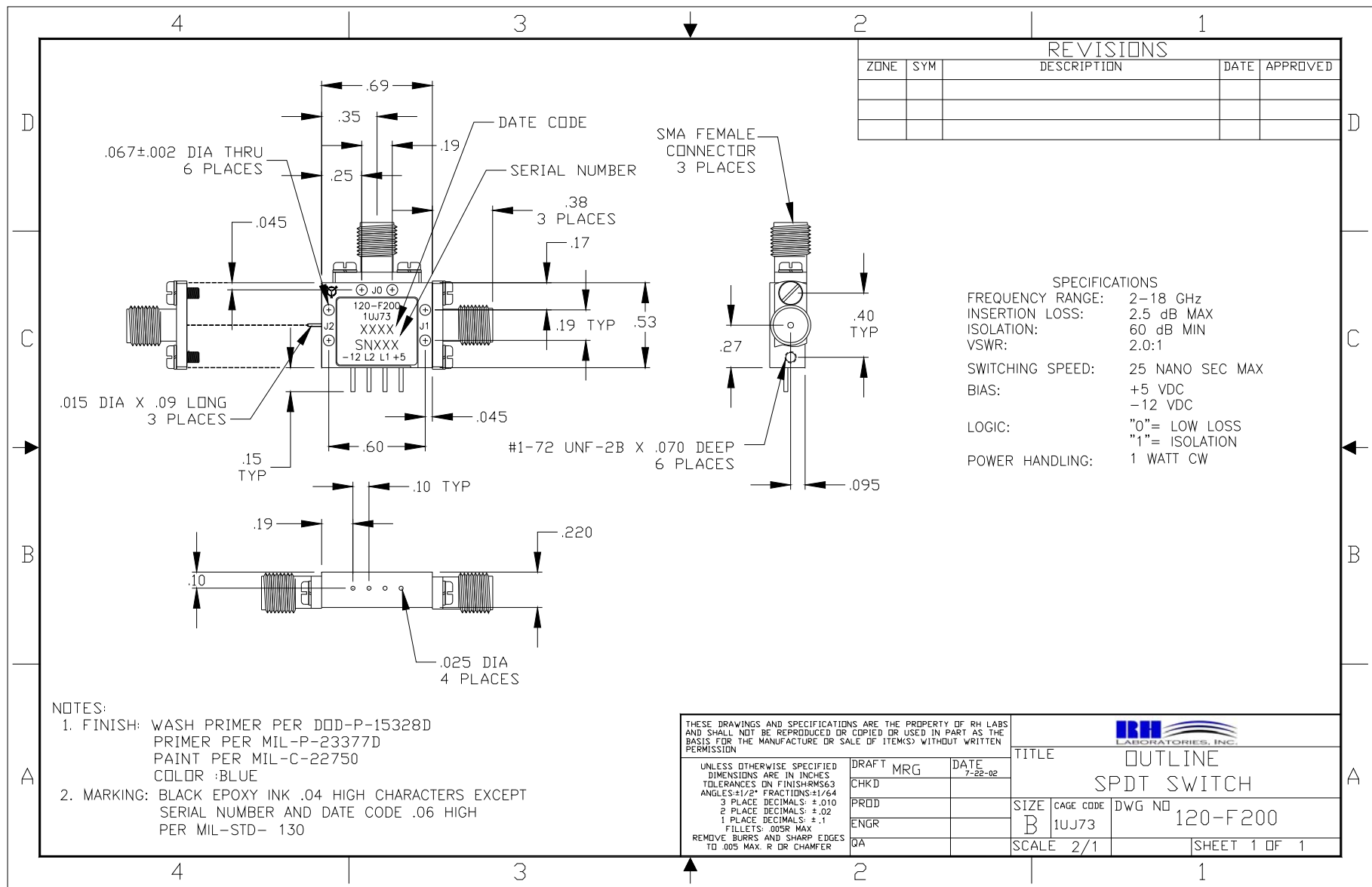
THESE DRAWINGS AND SPECIFICATIONS ARE THE PROPERTY OF RH LABS AND SHALL NOT BE REPRODUCED OR COPIED OR USED IN PART AS THE BASIS FOR THE MANUFACTURE OR SALE OF ITEM(S) WITHOUT WRITTEN PERMISSION			TITLE	
UNLESS OTHERWISE SPECIFIED DIMENSIONS ARE IN INCHES TOLERANCES ON FINISHES: ANGLES: 1/2" FRACTIONS: 1/64 3 PLACE DECIMALS: ±.010 2 PLACE DECIMALS: ±.02 1 PLACE DECIMALS: ±.1 FILLETS: .005R MAX REMOVE BURRS AND SHARP EDGES TO .005 MAX. R OR CHAMFER			OUTLINE	
DRAFT	MRG	DATE	SIZE	CAGE CODE
7-23-02			B	1UJ73
CHKD			DWG NO	110-F200
PROD			SCALE	2/1
ENGR				SHEET 1 OF 1
QA				



One Tanguay Avenue
 Nashua, New Hampshire 03063-1711
 Phone: 603-459-5900 • Fax: 603-459-5901







REVISIONS				
ZONE	SYM	DESCRIPTION	DATE	APPROVED

SPECIFICATIONS
 FREQUENCY RANGE: 2-18 GHz
 INSERTION LOSS: 2.5 dB MAX
 ISOLATION: 60 dB MIN
 VSWR: 2.0:1
 SWITCHING SPEED: 25 NANO SEC MAX
 BIAS: +5 VDC
 -12 VDC
 LOGIC: "0" = LOW LOSS
 "1" = ISOLATION
 POWER HANDLING: 1 WATT CW

- NOTES:**
- FINISH: WASH PRIMER PER DDD-P-15328D
 PRIMER PER MIL-P-23377D
 PAINT PER MIL-C-22750
 COLOR :BLUE
 - MARKING: BLACK EPOXY INK .04 HIGH CHARACTERS EXCEPT
 SERIAL NUMBER AND DATE CODE .06 HIGH
 PER MIL-STD- 130

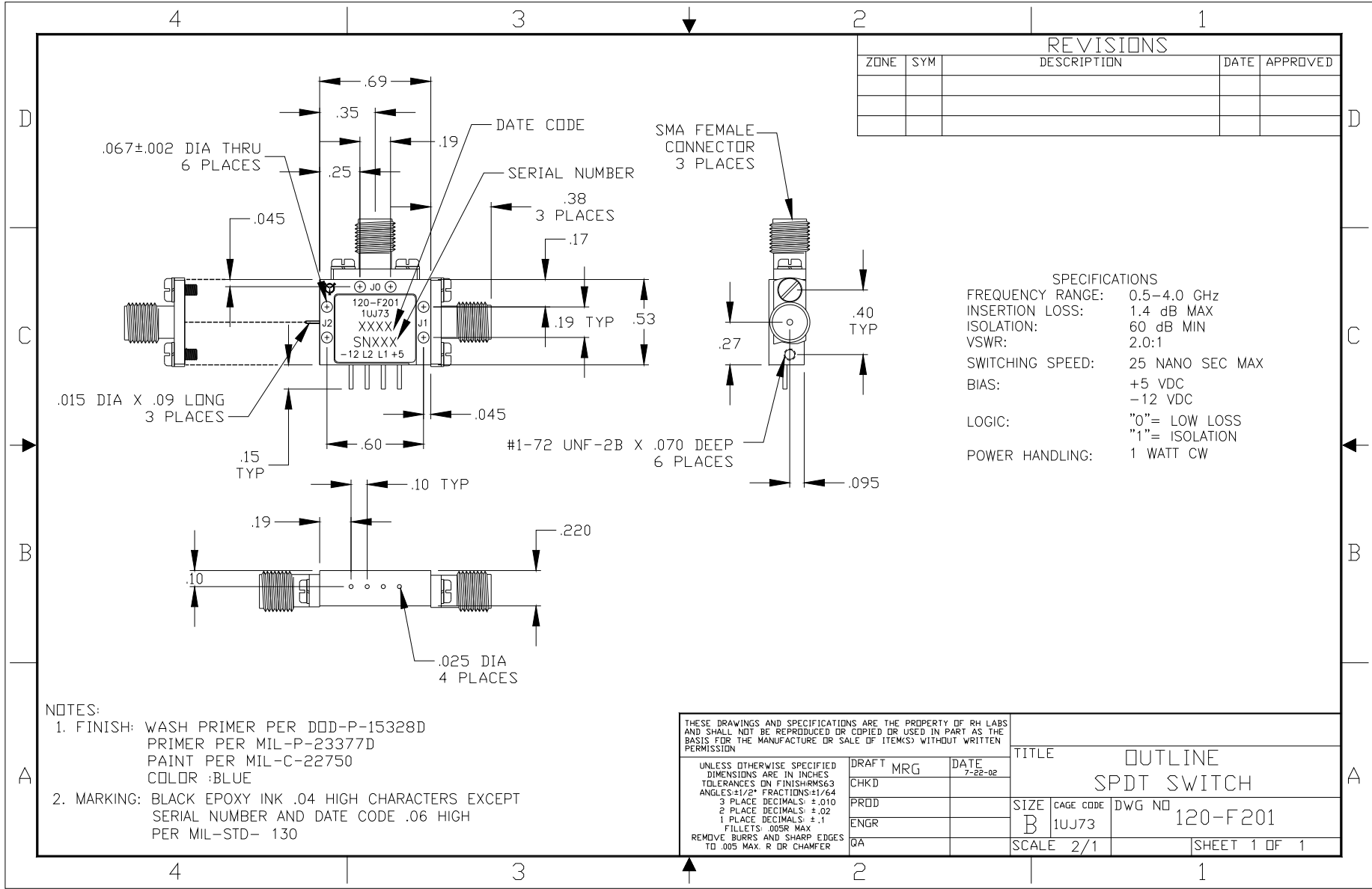
THESE DRAWINGS AND SPECIFICATIONS ARE THE PROPERTY OF RH LABS AND SHALL NOT BE REPRODUCED OR COPIED OR USED IN PART AS THE BASIS FOR THE MANUFACTURE OR SALE OF ITEMS WITHOUT WRITTEN PERMISSION

UNLESS OTHERWISE SPECIFIED DIMENSIONS ARE IN INCHES	DRAFT	MRG	DATE
TOLERANCES ON FINISH: RMS 63	CHKD		7-22-02
ANGLES: ±1/2° FRACTIONS: ±1/64	PRDD		
3 PLACE DECIMALS: ±.010	ENGR		
2 PLACE DECIMALS: ±.02	QA		
1 PLACE DECIMALS: ±.1			
FILLET: .005R MAX			
REMOVE BURRS AND SHARP EDGES TO .005 MAX. R OR CHAMFER			

TITLE		
OUTLINE		
SPDT SWITCH		
SIZE	CAGE CODE	DWG NO
B	1UJ73	120-F200
SCALE	SHEET 1 OF 1	
2/1		



One Tanguay Avenue
 Nashua, New Hampshire 03063-1711
 Phone: 603-459-5900 • Fax: 603-459-5901



REVISIONS				
ZONE	SYM	DESCRIPTION	DATE	APPROVED

SPECIFICATIONS

FREQUENCY RANGE:	0.5-4.0 GHz
INSERTION LOSS:	1.4 dB MAX
ISOLATION:	60 dB MIN
VSWR:	2.0:1
SWITCHING SPEED:	25 NANO SEC MAX
BIAS:	+5 VDC -12 VDC
LOGIC:	"0"= LOW LOSS "1"= ISOLATION
POWER HANDLING:	1 WATT CW

- NOTES:
- FINISH: WASH PRIMER PER DOD-P-15328D
PRIMER PER MIL-P-23377D
PAINT PER MIL-C-22750
COLOR :BLUE
 - MARKING: BLACK EPOXY INK .04 HIGH CHARACTERS EXCEPT
SERIAL NUMBER AND DATE CODE .06 HIGH
PER MIL-STD- 130

THESE DRAWINGS AND SPECIFICATIONS ARE THE PROPERTY OF RH LABS AND SHALL NOT BE REPRODUCED OR COPIED OR USED IN PART AS THE BASIS FOR THE MANUFACTURE OR SALE OF ITEMS WITHOUT WRITTEN PERMISSION

UNLESS OTHERWISE SPECIFIED DIMENSIONS ARE IN INCHES TOLERANCES ON FINISH RMS63 ANGLES ±1/2° FRACTIONS ±1/64 3 PLACE DECIMALS: ±.010 2 PLACE DECIMALS: ±.02 1 PLACE DECIMALS: ±.1 FILLETS: .005R MAX REMOVE BURRS AND SHARP EDGES TO .005 MAX. R OR CHAMFER

DRAFT	MRG	DATE
CHKD		7-22-02
PRD		
ENGR		
QA		

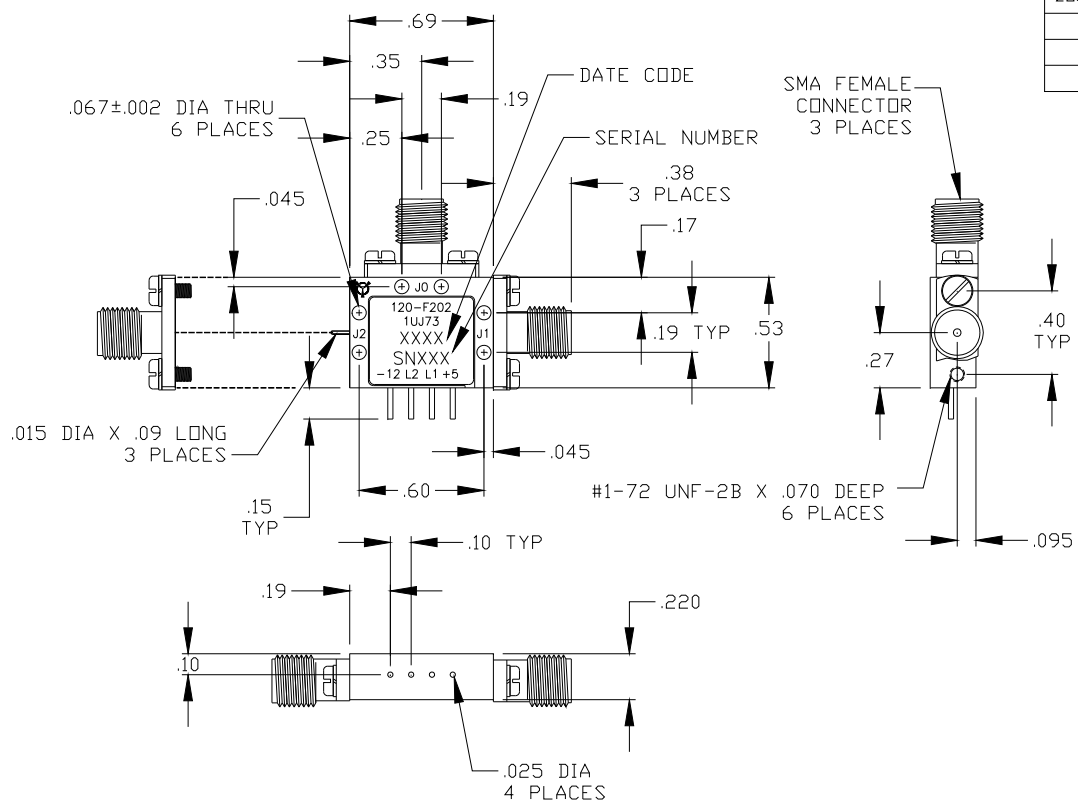
TITLE			OUTLINE	
			SPDT SWITCH	
SIZE	CAGE CODE	DWG NO		
B	1UJ73	120-F201		
SCALE	2/1	SHEET	1 OF 1	



One Tanguay Avenue
Nashua, New Hampshire 03063-1711
Phone: 603-459-5900 • Fax: 603-459-5901

REVISIONS

ZONE	SYM	DESCRIPTION	DATE	APPROVED



SPECIFICATIONS

FREQUENCY RANGE: 2-18 GHz
 INSERTION LOSS: 3.0 dB MAX
 ISOLATION: 60 dB MIN
 VSWR: 2.0:1

SWITCHING SPEED: 25 NANO SEC MAX
 BIAS: +5 VDC
 -12 VDC

LOGIC: "0"= LOW LOSS
 "1"= ISOLATION

POWER HANDLING: 1 WATT CW

- NOTES:
1. FINISH: WASH PRIMER PER DDD-P-15328D
 PRIMER PER MIL-P-23377D
 PAINT PER MIL-C-22750
 COLOR :BLUE
 2. MARKING: BLACK EPOXY INK .04 HIGH CHARACTERS EXCEPT
 SERIAL NUMBER AND DATE CODE .06 HIGH
 PER MIL-STD- 130

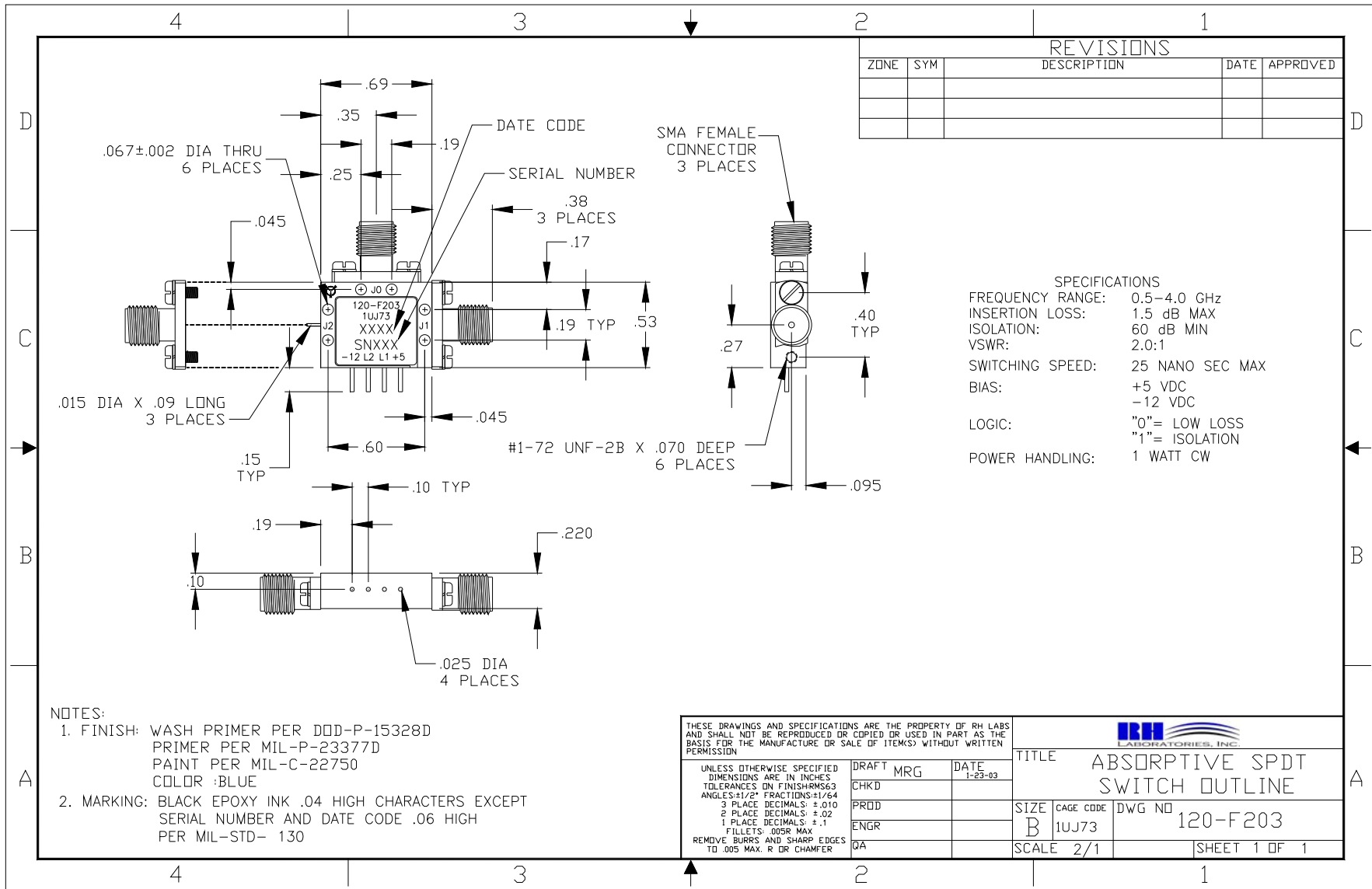
THESE DRAWINGS AND SPECIFICATIONS ARE THE PROPERTY OF RH LABS AND SHALL NOT BE REPRODUCED OR COPIED OR USED IN PART AS THE BASIS FOR THE MANUFACTURE OR SALE OF ITEM(S) WITHOUT WRITTEN PERMISSION

UNLESS OTHERWISE SPECIFIED DIMENSIONS ARE IN INCHES
 TOLERANCES ON FINISHES: .003
 ANGLES: 1/2" FRACTIONS: 1/64
 3 PLACE DECIMALS: ±.010
 2 PLACE DECIMALS: ±.02
 1 PLACE DECIMALS: ±.1
 FILLETS: .005R MAX
 REMOVE BURRS AND SHARP EDGES TO .005 MAX. R OR CHAMFER

DRAFT MRG		DATE	10-8-02	
CHKD				
PRD				
ENGR				
QA				
TITLE		SIZE	CAGE CODE	DWG NO
OUTLINE ABSORPTIVE SPDT SWITCH		B	1UJ73	120-F202
SCALE			SHEET 1 OF 1	
2/1				



One Tanguay Avenue
 Nashua, New Hampshire 03063-1711
 Phone: 603-459-5900 • Fax: 603-459-5901



REVISIONS				
ZONE	SYM	DESCRIPTION	DATE	APPROVED

SPECIFICATIONS	
FREQUENCY RANGE:	0.5-4.0 GHz
INSERTION LOSS:	1.5 dB MAX
ISOLATION:	60 dB MIN
VSWR:	2.0:1
SWITCHING SPEED:	25 NANO SEC MAX
BIAS:	+5 VDC -12 VDC
LOGIC:	"0"= LOW LOSS "1"= ISOLATION
POWER HANDLING:	1 WATT CW

- NOTES:
1. FINISH: WASH PRIMER PER DOD-P-15328D
PRIMER PER MIL-P-23377D
PAINT PER MIL-C-22750
COLOR :BLUE
 2. MARKING: BLACK EPOXY INK .04 HIGH CHARACTERS EXCEPT
SERIAL NUMBER AND DATE CODE .06 HIGH
PER MIL-STD- 130

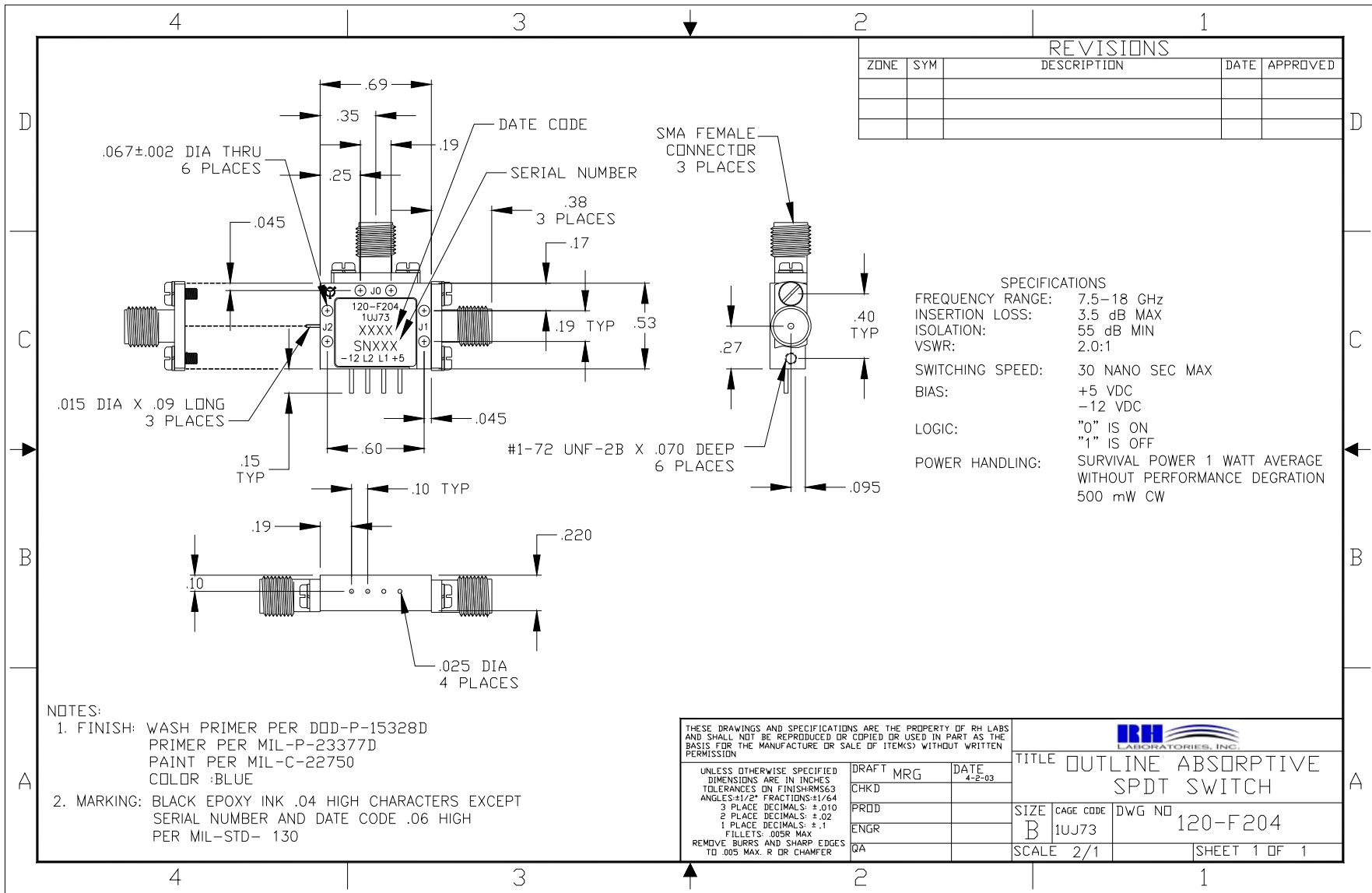
THESE DRAWINGS AND SPECIFICATIONS ARE THE PROPERTY OF RH LABS AND SHALL NOT BE REPRODUCED OR COPIED OR USED IN PART AS THE BASIS FOR THE MANUFACTURE OR SALE OF ITEMS WITHOUT WRITTEN PERMISSION

UNLESS OTHERWISE SPECIFIED DIMENSIONS ARE IN INCHES
TOLERANCES ON FINISHES: .063
ANGLES: 1/2" FRACTIONS: 1/64
3 PLACE DECIMALS: ±.010
2 PLACE DECIMALS: ±.02
1 PLACE DECIMALS: ±.1
FILLETS: .005R MAX
REMOVE BURRS AND SHARP EDGES TO .005 MAX. R DR CHAMFER

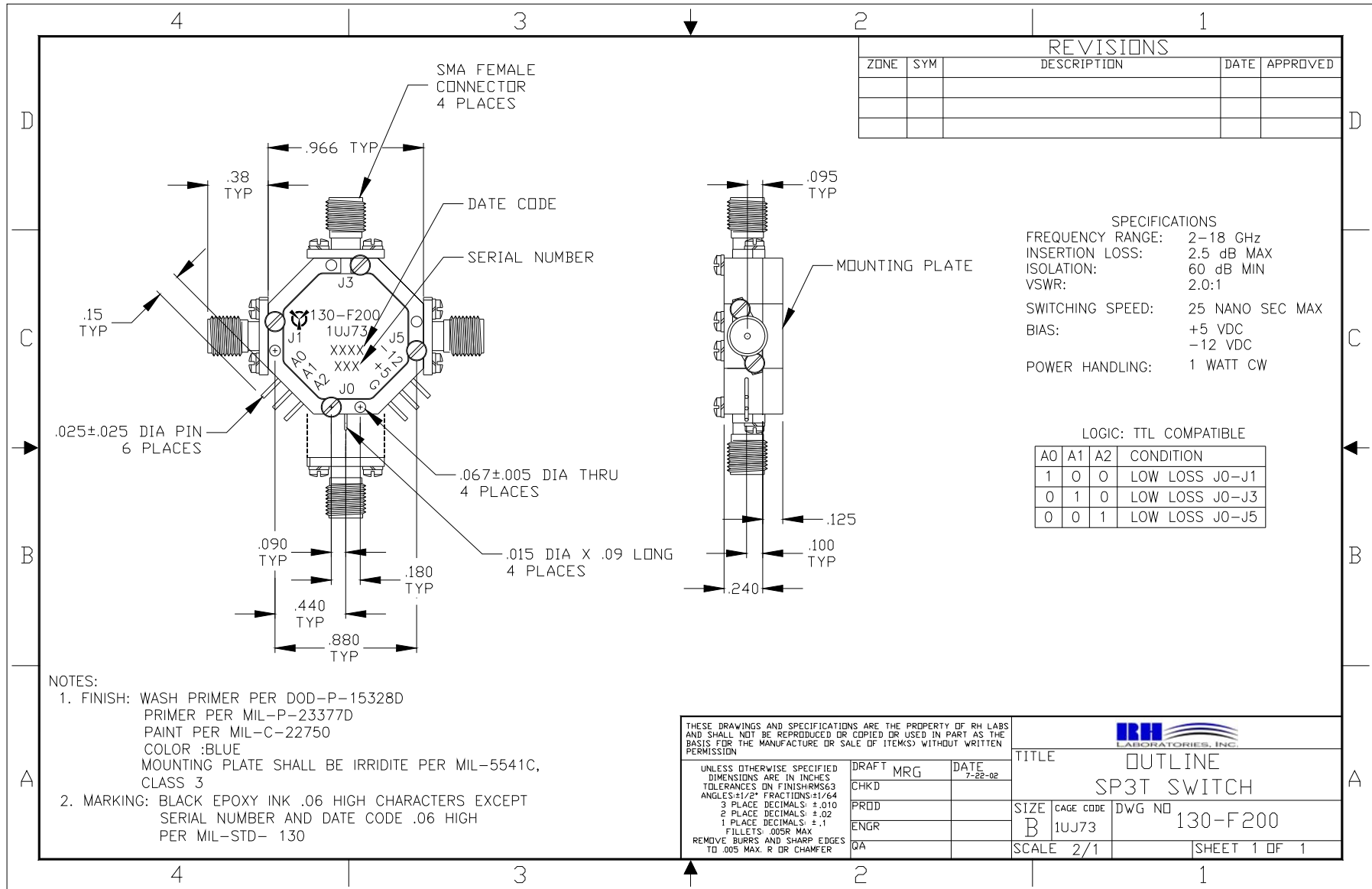
DRAFT		MRG	DATE	1-23-03		TITLE		ABSORPTIVE SPDT SWITCH OUTLINE	
CHKD						SIZE	CAGE CODE	DWG NO	
PRDD						B	1UJ73	120-F203	
ENGR						SCALE	2/1	SHEET	1 OF 1
QA									



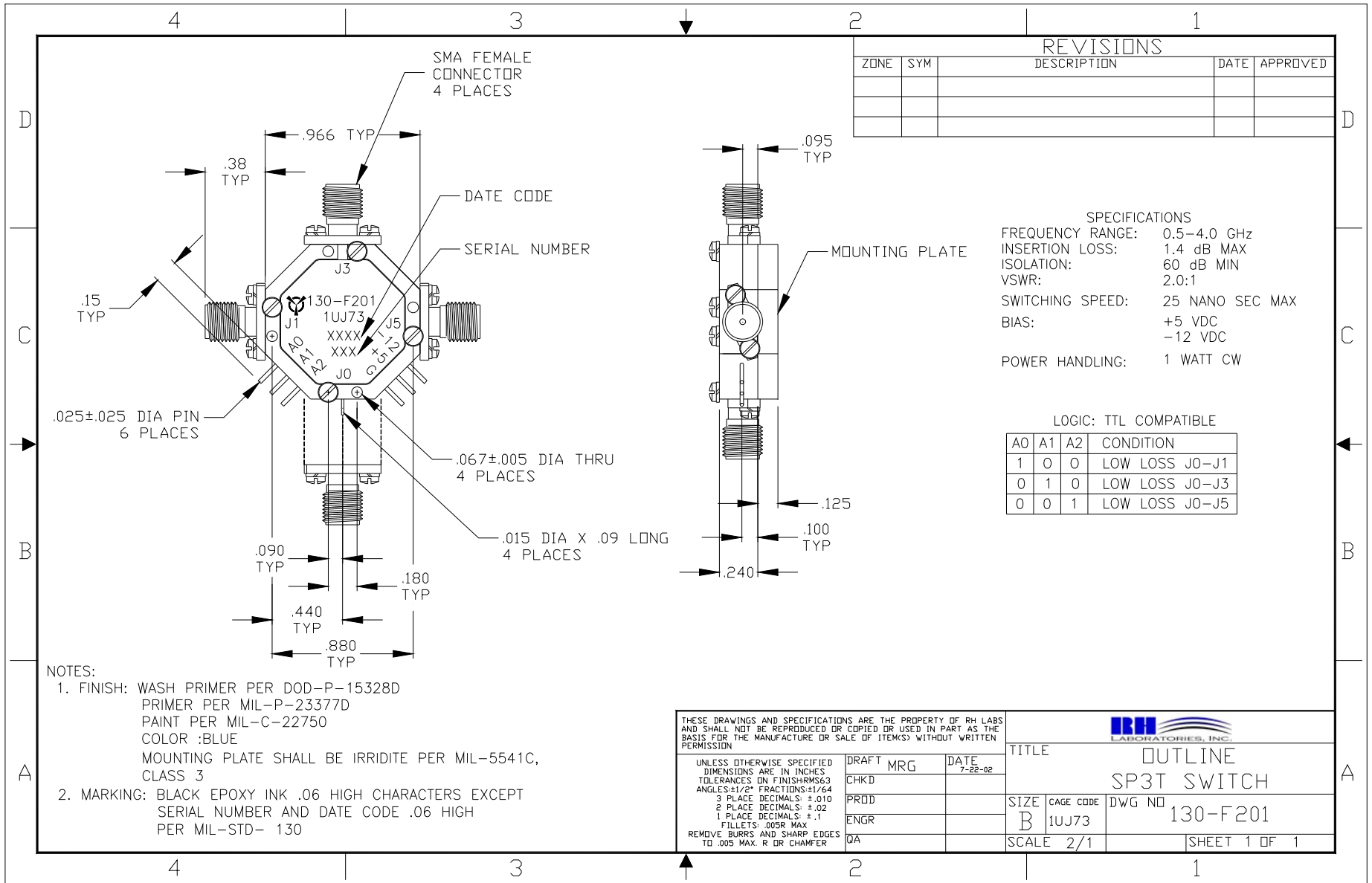
One Tanguay Avenue
Nashua, New Hampshire 03063-1711
Phone: 603-459-5900 • Fax: 603-459-5901



One Tanguay Avenue
 Nashua, New Hampshire 03063-1711
 Phone: 603-459-5900 • Fax: 603-459-5901



One Tanguay Avenue
 Nashua, New Hampshire 03063-1711
 Phone: 603-459-5900 • Fax: 603-459-5901



REVISIONS				
ZONE	SYM	DESCRIPTION	DATE	APPROVED

SPECIFICATIONS
 FREQUENCY RANGE: 0.5-4.0 GHz
 INSERTION LOSS: 1.4 dB MAX
 ISOLATION: 60 dB MIN
 VSWR: 2.0:1
 SWITCHING SPEED: 25 NANO SEC MAX
 BIAS: +5 VDC
 -12 VDC
 POWER HANDLING: 1 WATT CW

LOGIC: TTL COMPATIBLE

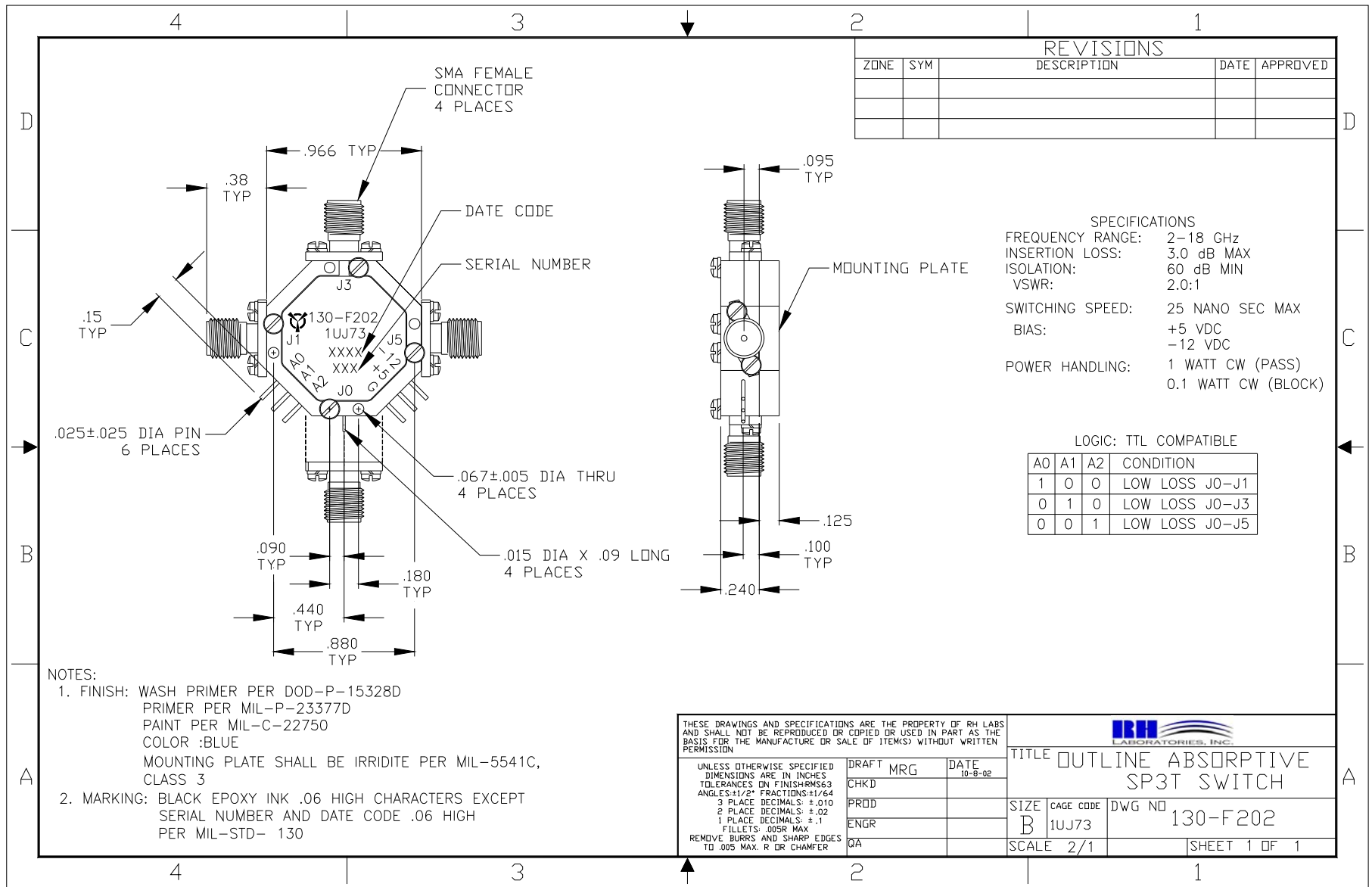
A0	A1	A2	CONDITION
1	0	0	LOW LOSS J0-J1
0	1	0	LOW LOSS J0-J3
0	0	1	LOW LOSS J0-J5

- NOTES:
- FINISH: WASH PRIMER PER DOD-P-15328D
 PRIMER PER MIL-P-23377D
 PAINT PER MIL-C-22750
 COLOR :BLUE
 MOUNTING PLATE SHALL BE IRRIDITE PER MIL-5541C, CLASS 3
 - MARKING: BLACK EPOXY INK .06 HIGH CHARACTERS EXCEPT SERIAL NUMBER AND DATE CODE .06 HIGH PER MIL-STD- 130

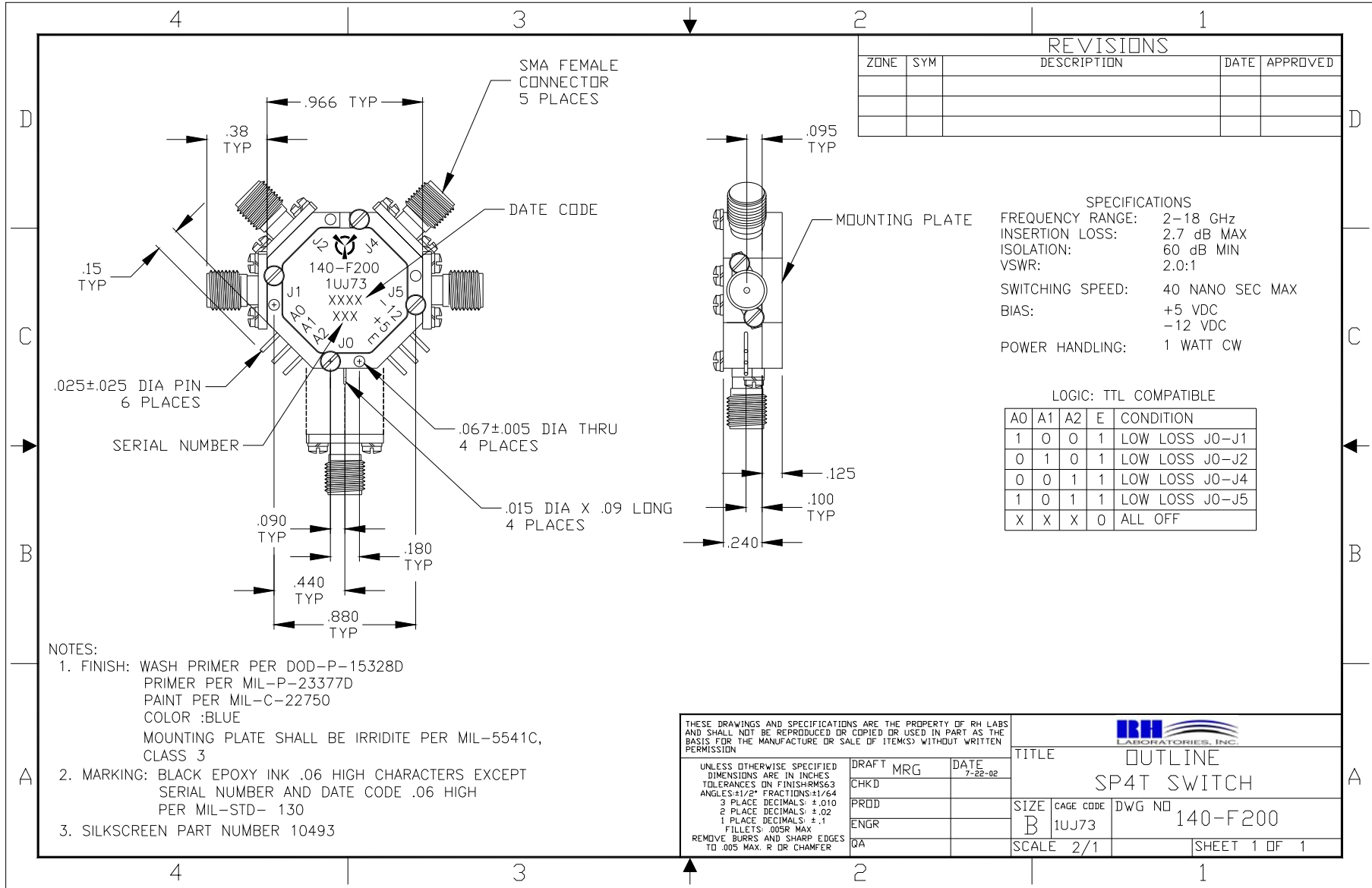
<small>THESE DRAWINGS AND SPECIFICATIONS ARE THE PROPERTY OF RH LABS AND SHALL NOT BE REPRODUCED OR COPIED OR USED IN PART AS THE BASIS FOR THE MANUFACTURE OR SALE OF ITEM(S) WITHOUT WRITTEN PERMISSION</small>				
<small>UNLESS OTHERWISE SPECIFIED DIMENSIONS ARE IN INCHES TOLERANCES ON FINISH RMS63 ANGLES-1/2° FRACTIONS-1/64 3 PLACE DECIMALS: ±.010 2 PLACE DECIMALS: ±.02 1 PLACE DECIMALS: ±.1 FILLETS: .008R MAX REMOVE BURRS AND SHARP EDGES TO .005 MAX. R OR CHAMFER</small>			TITLE OUTLINE SP3T SWITCH	
DRAFT	MRG	DATE	SIZE	CAGE CODE
		7-22-02	B	1UJ73
CHKD			DWG NO	130-F201
PROD			SCALE	2/1
ENGR				SHEET 1 OF 1
QA				



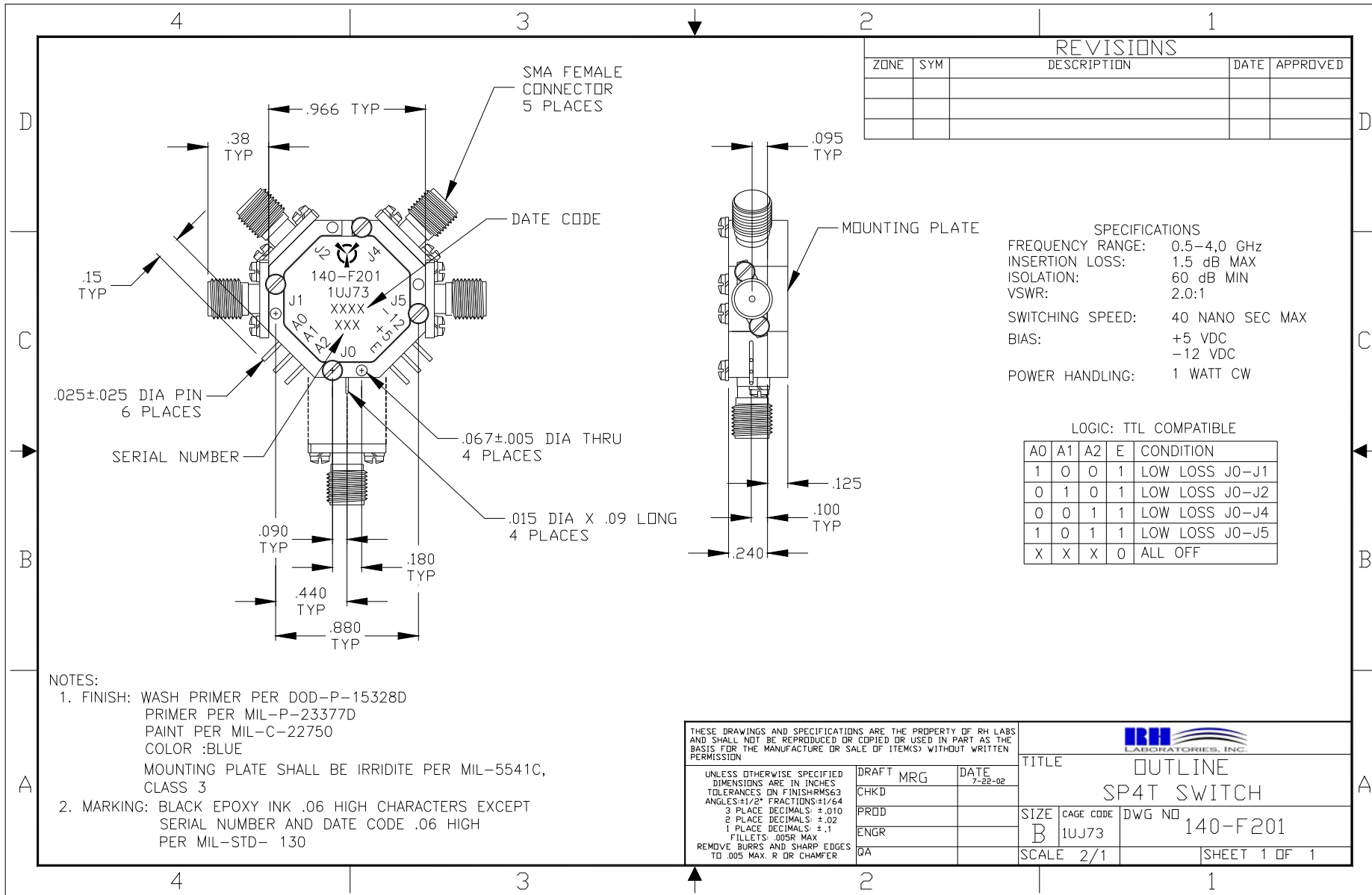
One Tanguay Avenue
 Nashua, New Hampshire 03063-1711
 Phone: 603-459-5900 • Fax: 603-459-5901



One Tanguay Avenue
 Nashua, New Hampshire 03063-1711
 Phone: 603-459-5900 • Fax: 603-459-5901



One Tanguay Avenue
 Nashua, New Hampshire 03063-1711
 Phone: 603-459-5900 • Fax: 603-459-5901



REVISIONS				
ZONE	SYM	DESCRIPTION	DATE	APPROVED

SPECIFICATIONS
 FREQUENCY RANGE: 0.5-4.0 GHz
 INSERTION LOSS: 1.5 dB MAX
 ISOLATION: 60 dB MIN
 VSWR: 2.0:1
 SWITCHING SPEED: 40 NANO SEC MAX
 BIAS: +5 VDC
 -12 VDC
 POWER HANDLING: 1 WATT CW

LOGIC: TTL COMPATIBLE

A0	A1	A2	E	CONDITION
1	0	0	1	LOW LOSS J0-J1
0	1	0	1	LOW LOSS J0-J2
0	0	1	1	LOW LOSS J0-J4
1	0	1	1	LOW LOSS J0-J5
X	X	X	0	ALL OFF

NOTES:
 1. FINISH: WASH PRIMER PER DOD-P-15328
 PRIMER PER MIL-P-23377D
 PAINT PER MIL-C-22750
 COLOR :BLUE
 MOUNTING PLATE SHALL BE IRRIDITE PER MIL-5541C,
 CLASS 3
 2. MARKING: BLACK EPOXY INK .06 HIGH CHARACTERS EXCEPT
 SERIAL NUMBER AND DATE CODE .06 HIGH
 PER MIL-STD- 130

THESE DRAWINGS AND SPECIFICATIONS ARE THE PROPERTY OF RH LABS AND SHALL NOT BE REPRODUCED OR COPIED OR USED IN PART AS THE BASIS FOR THE MANUFACTURE OR SALE OF ITEM(S) WITHOUT WRITTEN PERMISSION

UNLESS OTHERWISE SPECIFIED DIMENSIONS ARE IN INCHES TOLERANCES ON FINISHES: M63 ANGLES: 1/2° FRACTIONS: 1/64 3 PLACE DECIMALS: ±.010 2 PLACE DECIMALS: ±.02 1 PLACE DECIMALS: ±.1 FILLETS: .005R MAX REMOVE BURRS AND SHARP EDGES TO .005 MAX. R OR CHAMFER

DRAFT MRG DATE 7-22-02
 CHKD
 PRDD
 ENGR
 QA

IRH
LABORATORIES, INC.

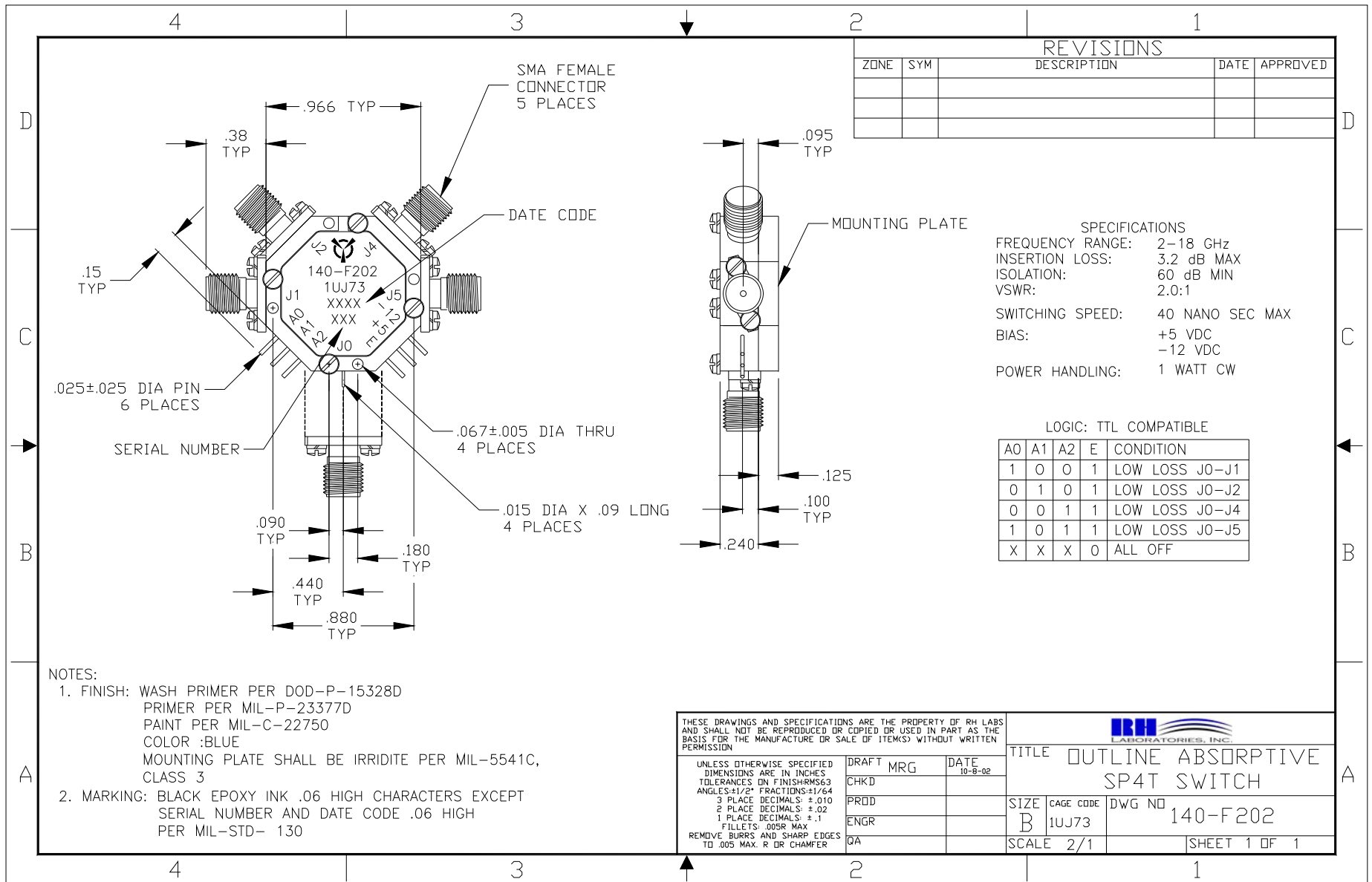
TITLE: **OUTLINE SP4T SWITCH**

SIZE: B CAGE CODE: 1UJ73 DWG NO: 140-F201

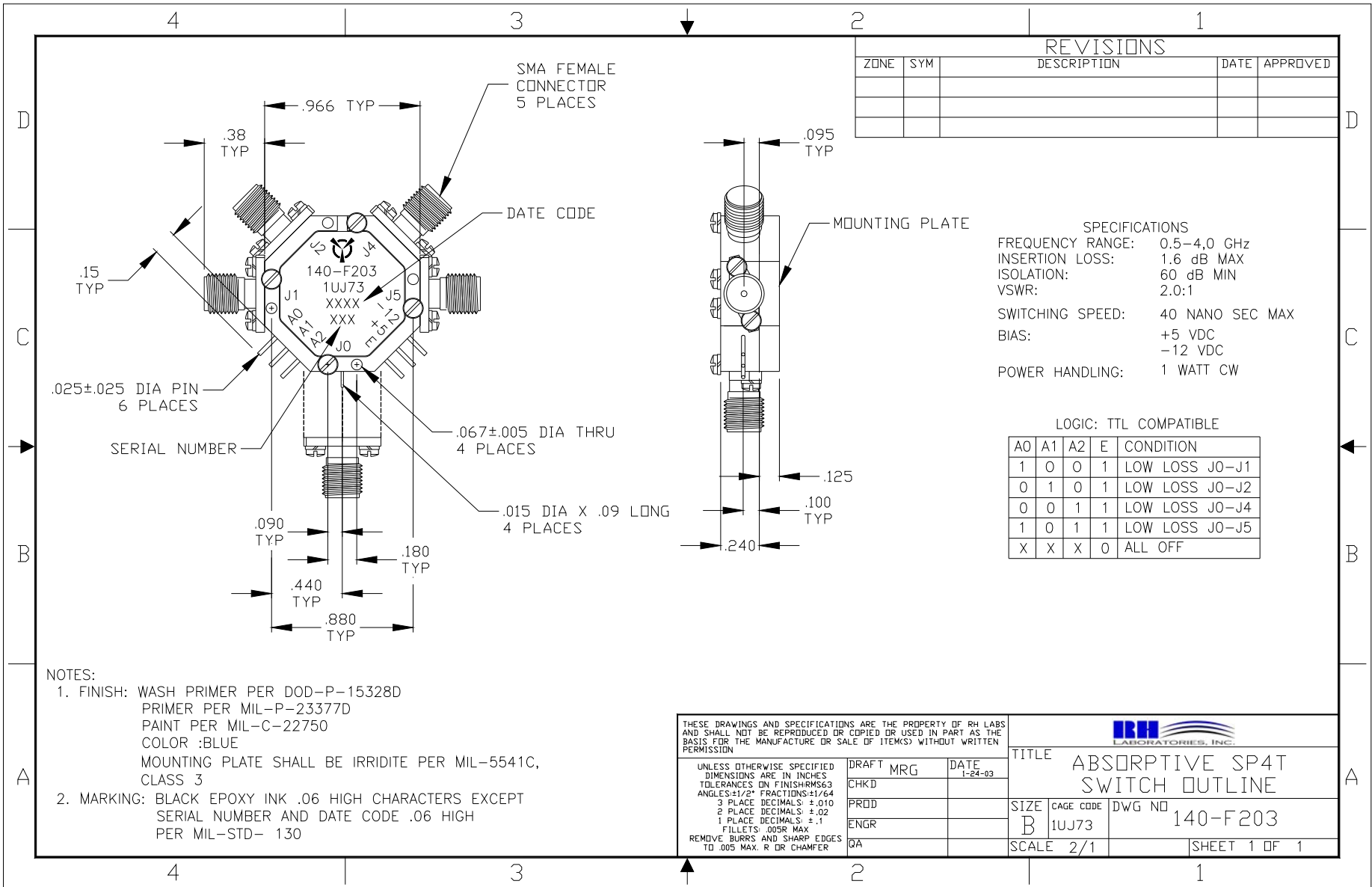
SCALE: 2/1 SHEET 1 OF 1



One Tanguay Avenue
 Nashua, New Hampshire 03063-1711
 Phone: 603-459-5900 • Fax: 603-459-5901



One Tanguay Avenue
 Nashua, New Hampshire 03063-1711
 Phone: 603-459-5900 • Fax: 603-459-5901



REVISIONS				
ZONE	SYM	DESCRIPTION	DATE	APPROVED

SPECIFICATIONS

FREQUENCY RANGE: 0.5-4.0 GHz
 INSERTION LOSS: 1.6 dB MAX
 ISOLATION: 60 dB MIN
 VSWR: 2.0:1

SWITCHING SPEED: 40 NANO SEC MAX
 BIAS: +5 VDC
 -12 VDC

POWER HANDLING: 1 WATT CW

LOGIC: TTL COMPATIBLE

A0	A1	A2	E	CONDITION
1	0	0	1	LOW LOSS J0-J1
0	1	0	1	LOW LOSS J0-J2
0	0	1	1	LOW LOSS J0-J4
1	0	1	1	LOW LOSS J0-J5
X	X	X	0	ALL OFF

- NOTES:**
- FINISH: WASH PRIMER PER DOD-P-15328D
 PRIMER PER MIL-P-23377D
 PAINT PER MIL-C-22750
 COLOR :BLUE
 MOUNTING PLATE SHALL BE IRRIDITE PER MIL-5541C, CLASS 3
 - MARKING: BLACK EPOXY INK .06 HIGH CHARACTERS EXCEPT SERIAL NUMBER AND DATE CODE .06 HIGH PER MIL-STD- 130

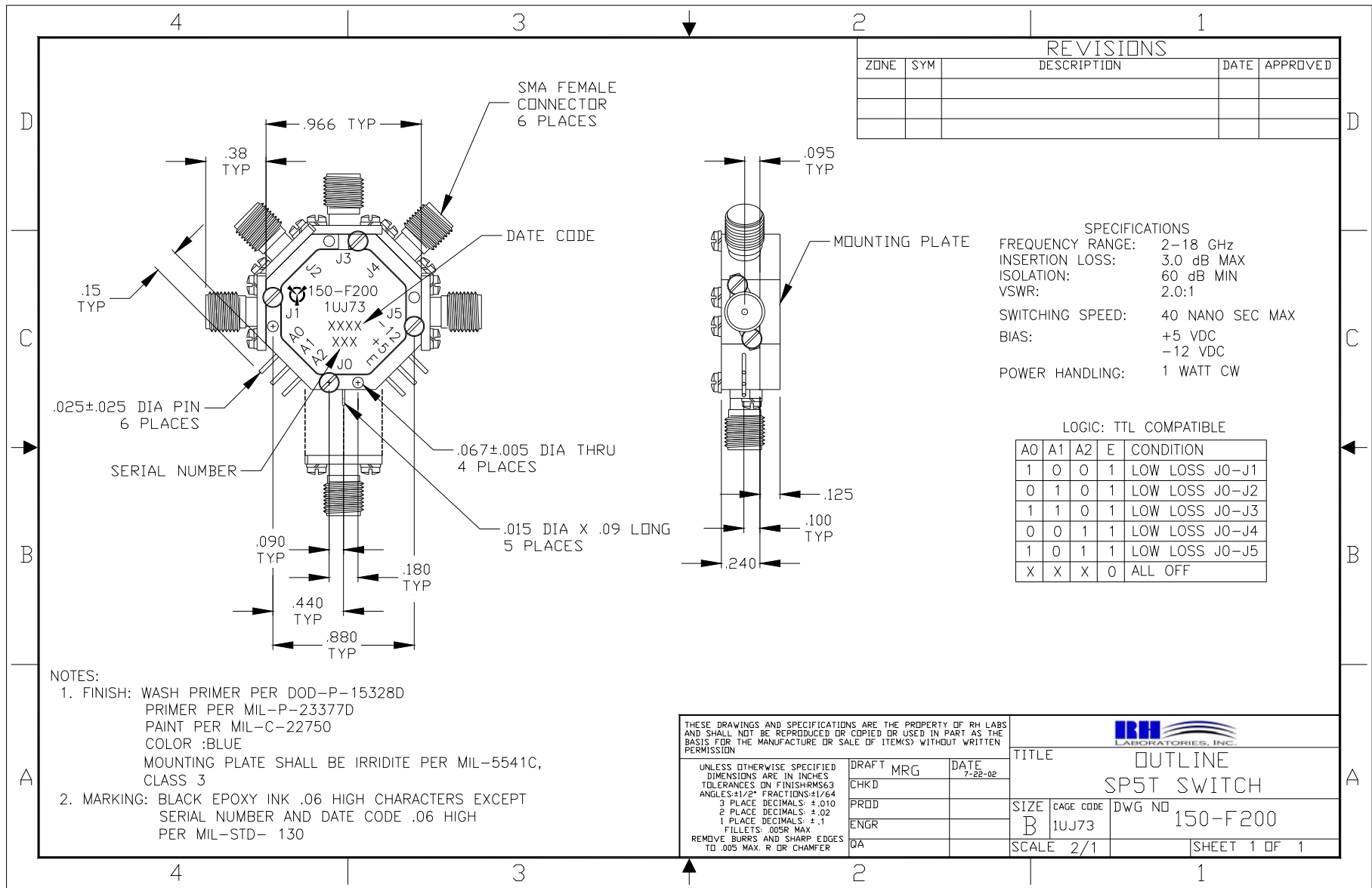
THESE DRAWINGS AND SPECIFICATIONS ARE THE PROPERTY OF RH LABS AND SHALL NOT BE REPRODUCED OR COPIED OR USED IN PART AS THE BASIS FOR THE MANUFACTURE OR SALE OF ITEM(S) WITHOUT WRITTEN PERMISSION

UNLESS OTHERWISE SPECIFIED DIMENSIONS ARE IN INCHES
 TOLERANCES ON FINISH: RMS63
 ANGLES: 1/2° FRACTIONS: ±1/64
 3 PLACE DECIMALS: ±.010
 2 PLACE DECIMALS: ±.02
 1 PLACE DECIMALS: ±.1
 FILLETS: .005R MAX
 REMOVE BURRS AND SHARP EDGES TO .005 MAX. R OR CHAMFER

DRAFT		MRG	DATE	1-24-03	
CHKD					
PRD					
ENGR					
QA					
TITLE			ABSORPTIVE SP4T SWITCH OUTLINE		
SIZE	CAGE CODE	DWG NO	140-F203		
B	1UJ73				
SCALE		2/1	SHEET 1 OF 1		



One Tanguay Avenue
 Nashua, New Hampshire 03063-1711
 Phone: 603-459-5900 • Fax: 603-459-5901



REVISIONS				
ZONE	SYM	DESCRIPTION	DATE	APPROVED

SPECIFICATIONS
 FREQUENCY RANGE: 2-18 GHz
 INSERTION LOSS: 3.0 dB MAX
 ISOLATION: 60 dB MIN
 VSWR: 2.0:1
 SWITCHING SPEED: 40 NANO SEC MAX
 BIAS: +5 VDC
 -12 VDC
 POWER HANDLING: 1 WATT CW

LOGIC: TTL COMPATIBLE

AO	A1	A2	E	CONDITION
1	0	0	1	LOW LOSS J0-J1
0	1	0	1	LOW LOSS J0-J2
1	1	0	1	LOW LOSS J0-J3
0	0	1	1	LOW LOSS J0-J4
1	0	1	1	LOW LOSS J0-J5
X	X	X	0	ALL OFF

- NOTES:
 1. FINISH: WASH PRIMER PER DOD-P-15328D
 PRIMER PER MIL-P-23377D
 PAINT PER MIL-C-22750
 COLOR :BLUE
 MOUNTING PLATE SHALL BE IRRIDITE PER MIL-5541C,
 CLASS 3
 2. MARKING: BLACK EPOXY INK .06 HIGH CHARACTERS EXCEPT
 SERIAL NUMBER AND DATE CODE .06 HIGH
 PER MIL-STD- 130

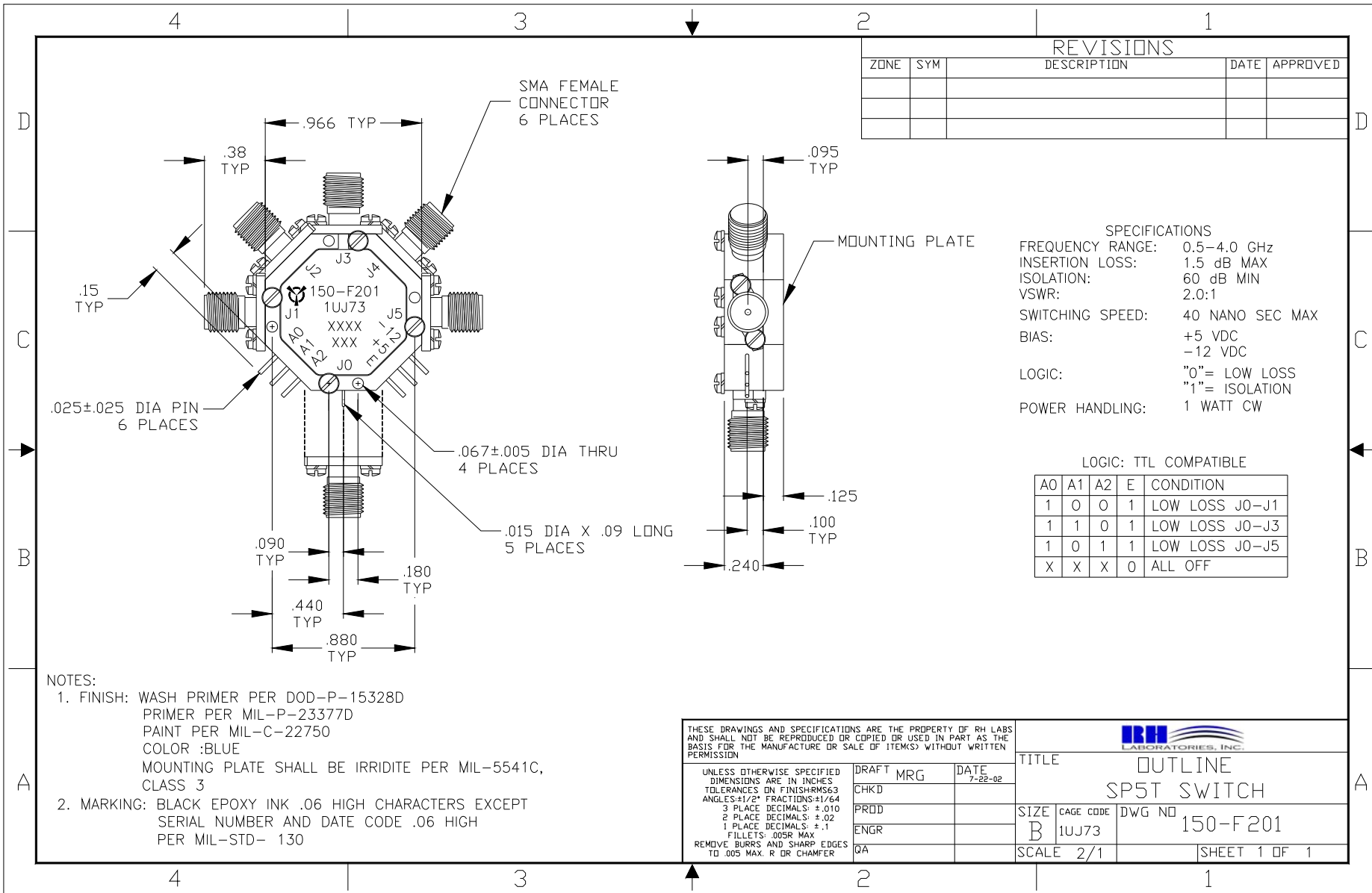
THESE DRAWINGS AND SPECIFICATIONS ARE THE PROPERTY OF RH LABS AND SHALL NOT BE REPRODUCED OR COPIED OR USED IN PART AS THE BASIS FOR THE MANUFACTURE OR SALE OF ITEM(S) WITHOUT WRITTEN PERMISSION

UNLESS OTHERWISE SPECIFIED DIMENSIONS ARE IN INCHES
 TOLERANCES ON FINISHES: .005
 ANGLES: 1/2" FRACTIONS: 1/64
 3 PLACE DECIMALS: ±.010
 2 PLACE DECIMALS: ±.02
 1 PLACE DECIMALS: ±.1
 FILLETS: .005R MAX
 REMOVE BURRS AND SHARP EDGES TO .005 MAX. R OR CHAMFER

DRAFT		MRG	DATE	TITLE	
CHKD			7-22-02	OUTLINE	
PRDD				SP5T SWITCH	
ENGR				SIZE	CAGE CODE
QA				B	1UJ73
				DWG NO	150-F200
				SCALE	SHEET
				2/1	1 OF 1



One Tanguay Avenue
 Nashua, New Hampshire 03063-1711
 Phone: 603-459-5900 • Fax: 603-459-5901



REVISIONS				
ZONE	SYM	DESCRIPTION	DATE	APPROVED

SPECIFICATIONS
 FREQUENCY RANGE: 0.5-4.0 GHz
 INSERTION LOSS: 1.5 dB MAX
 ISOLATION: 60 dB MIN
 VSWR: 2.0:1
 SWITCHING SPEED: 40 NANO SEC MAX
 BIAS: +5 VDC
 -12 VDC
 LOGIC: "0"= LOW LOSS
 "1"= ISOLATION
 POWER HANDLING: 1 WATT CW

LOGIC: TTL COMPATIBLE

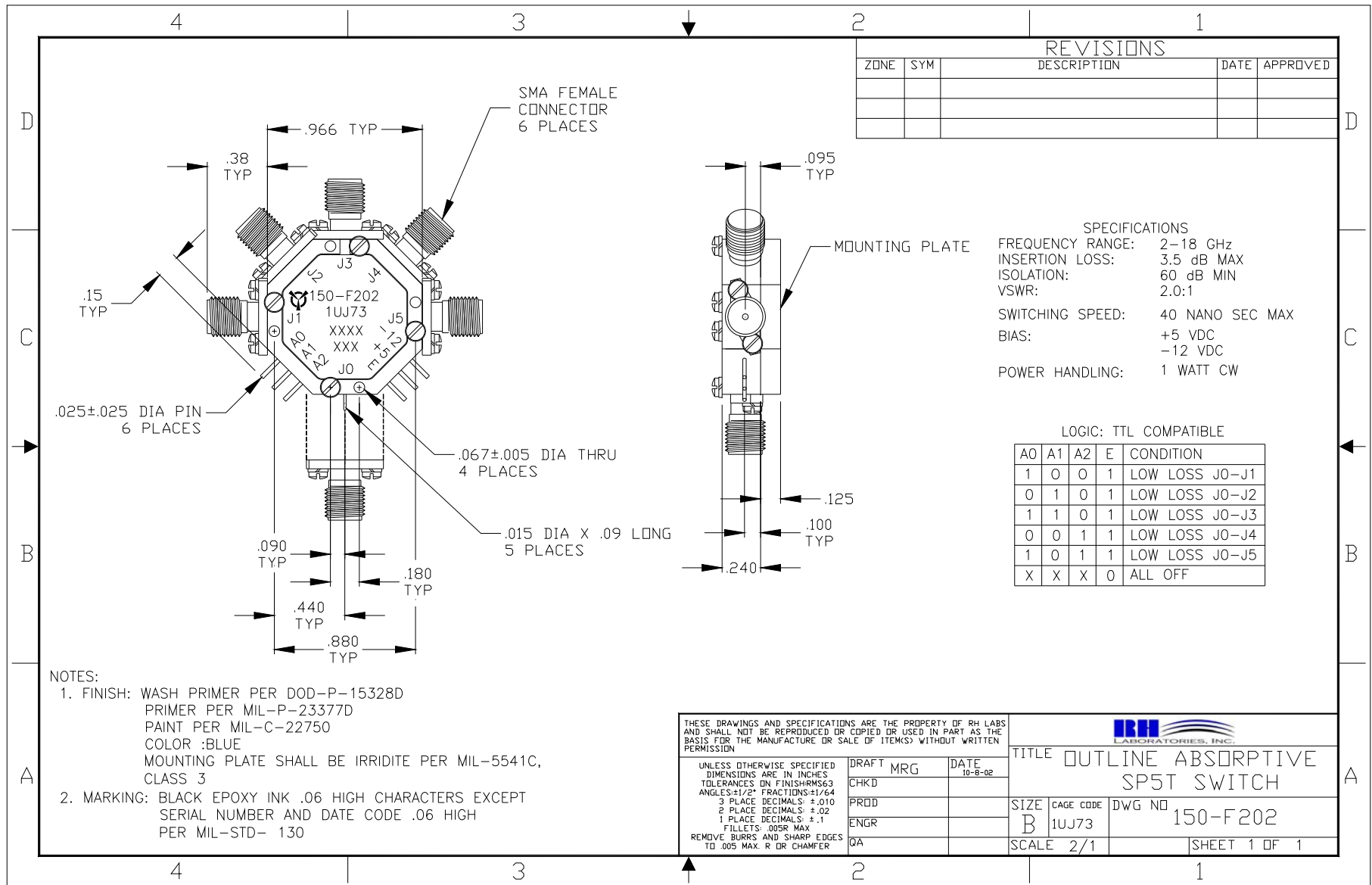
A0	A1	A2	E	CONDITION
1	0	0	1	LOW LOSS J0-J1
1	1	0	1	LOW LOSS J0-J3
1	0	1	1	LOW LOSS J0-J5
X	X	X	0	ALL OFF

NOTES:
 1. FINISH: WASH PRIMER PER DOD-P-15328D
 PRIMER PER MIL-P-23377D
 PAINT PER MIL-C-22750
 COLOR :BLUE
 MOUNTING PLATE SHALL BE IRRIDITE PER MIL-5541C,
 CLASS 3
 2. MARKING: BLACK EPOXY INK .06 HIGH CHARACTERS EXCEPT
 SERIAL NUMBER AND DATE CODE .06 HIGH
 PER MIL-STD- 130

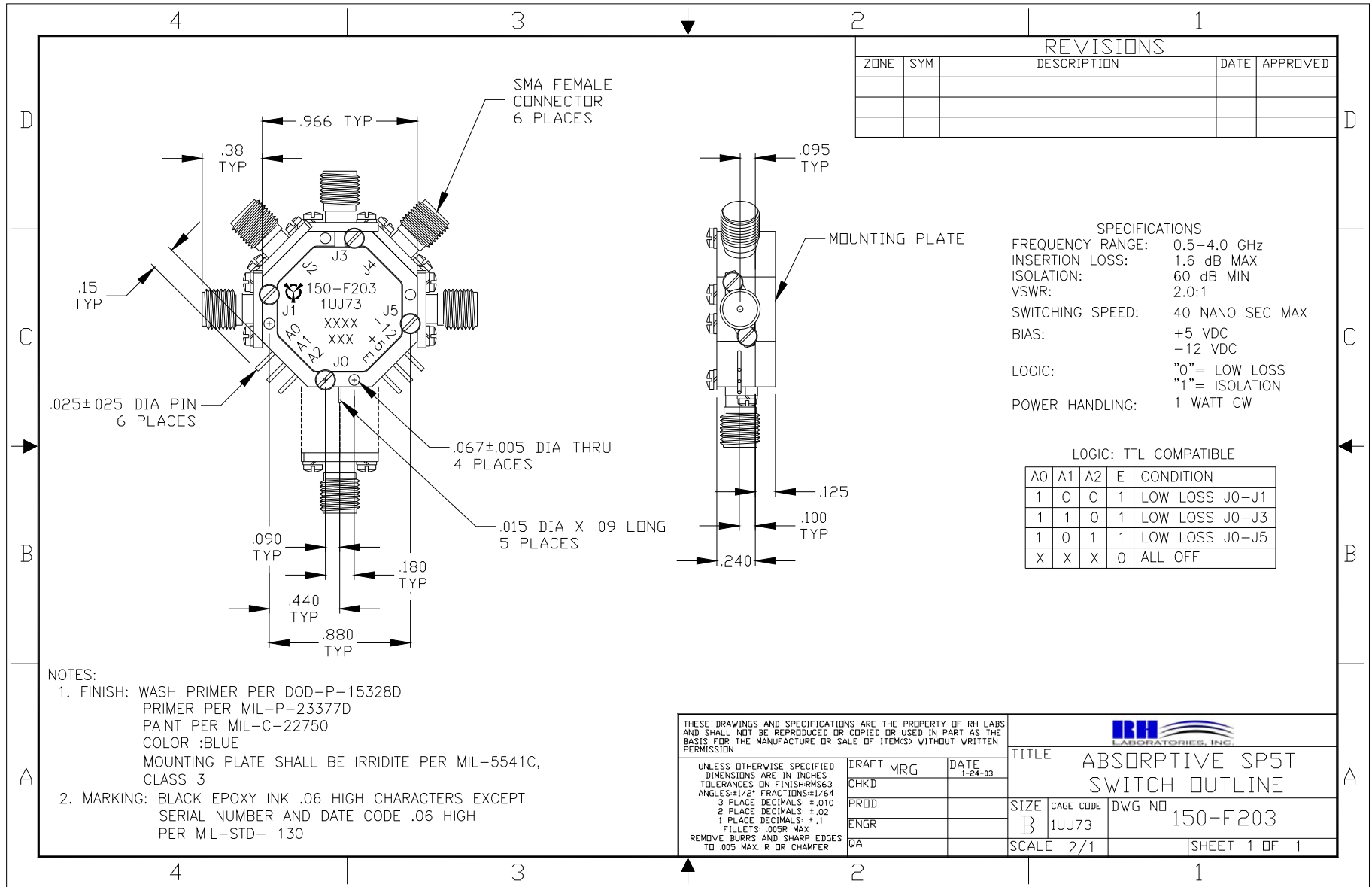
<small>THESE DRAWINGS AND SPECIFICATIONS ARE THE PROPERTY OF RH LABS AND SHALL NOT BE REPRODUCED OR COPIED OR USED IN PART AS THE BASIS FOR THE MANUFACTURE OR SALE OF ITEM(S) WITHOUT WRITTEN PERMISSION</small>						
<small>UNLESS OTHERWISE SPECIFIED DIMENSIONS ARE IN INCHES TOLERANCES ON FINISHES: 63 ANGLES: ±1/2° FRACTIONS: 1/64 3 PLACE DECIMALS: ±.010 2 PLACE DECIMALS: ±.02 1 PLACE DECIMALS: ±.1 FILLETS: .005R MAX REMOVE BURRS AND SHARP EDGES TO .005 MAX. R OR CHAMFER</small>	DRAFT MRG CHKD PRD ENGR QA	DATE 7-22-02	TITLE OUTLINE SP5T SWITCH	SIZE B	CAGE CODE 1UJ73	DWG NO 150-F201
SCALE 2/1			SHEET 1 OF 1			



One Tanguay Avenue
 Nashua, New Hampshire 03063-1711
 Phone: 603-459-5900 • Fax: 603-459-5901



One Tanguay Avenue
 Nashua, New Hampshire 03063-1711
 Phone: 603-459-5900 • Fax: 603-459-5901



REVISIONS				
ZONE	SYM	DESCRIPTION	DATE	APPROVED

SPECIFICATIONS

FREQUENCY RANGE: 0.5-4.0 GHz
 INSERTION LOSS: 1.6 dB MAX
 ISOLATION: 60 dB MIN
 VSWR: 2.0:1
 SWITCHING SPEED: 40 NANO SEC MAX
 BIAS: +5 VDC
 -12 VDC
 LOGIC: "0" = LOW LOSS
 "1" = ISOLATION
 POWER HANDLING: 1 WATT CW

LOGIC: TTL COMPATIBLE

A0	A1	A2	E	CONDITION
1	0	0	1	LOW LOSS J0-J1
1	1	0	1	LOW LOSS J0-J3
1	0	1	1	LOW LOSS J0-J5
X	X	X	0	ALL OFF

- NOTES:**
- FINISH: WASH PRIMER PER DOD-P-15328D
 PRIMER PER MIL-P-23377D
 PAINT PER MIL-C-22750
 COLOR :BLUE
 MOUNTING PLATE SHALL BE IRRIDITE PER MIL-5541C, CLASS 3
 - MARKING: BLACK EPOXY INK .06 HIGH CHARACTERS EXCEPT SERIAL NUMBER AND DATE CODE .06 HIGH PER MIL-STD- 130

THESE DRAWINGS AND SPECIFICATIONS ARE THE PROPERTY OF RH LABS AND SHALL NOT BE REPRODUCED OR COPIED OR USED IN PART AS THE BASIS FOR THE MANUFACTURE OR SALE OF ITEM(S) WITHOUT WRITTEN PERMISSION

UNLESS OTHERWISE SPECIFIED DIMENSIONS ARE IN INCHES
 TOLERANCES IN FINISH: RMS63
 ANGLES: 1/2° FRACTIONS: 1/64
 3 PLACE DECIMALS: ±.010
 2 PLACE DECIMALS: ±.02
 1 PLACE DECIMALS: ±.1
 FILLETS: .005R MAX
 REMOVE BURRS AND SHARP EDGES TO .005 MAX. R DR CHAMFER

DRAFT	MRG	DATE	1-24-03
CHKD			
PRDD			
ENGR			
QA			

IRH LABORATORIES, INC.

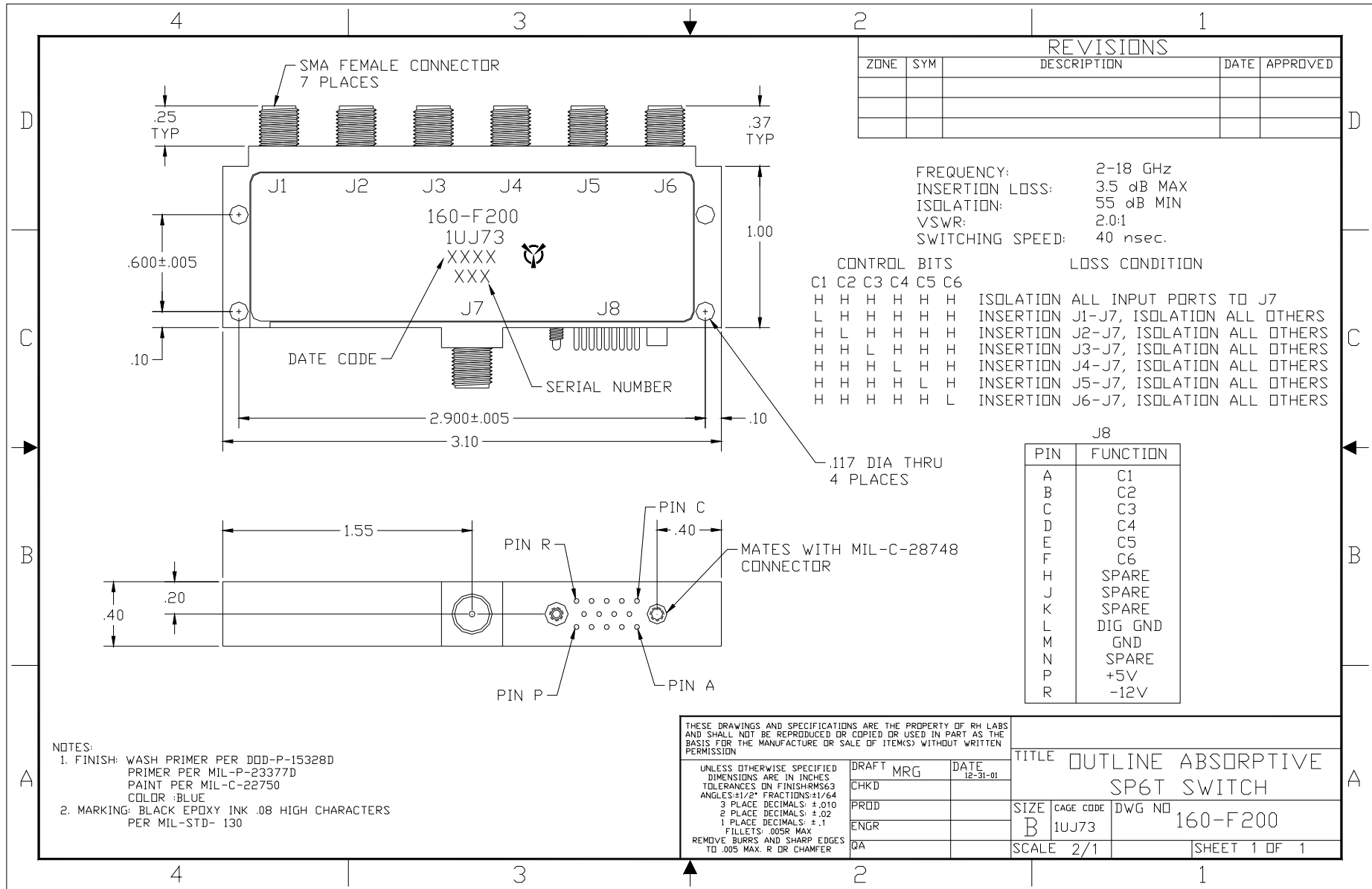
TITLE: ABSORPTIVE SP5T SWITCH OUTLINE

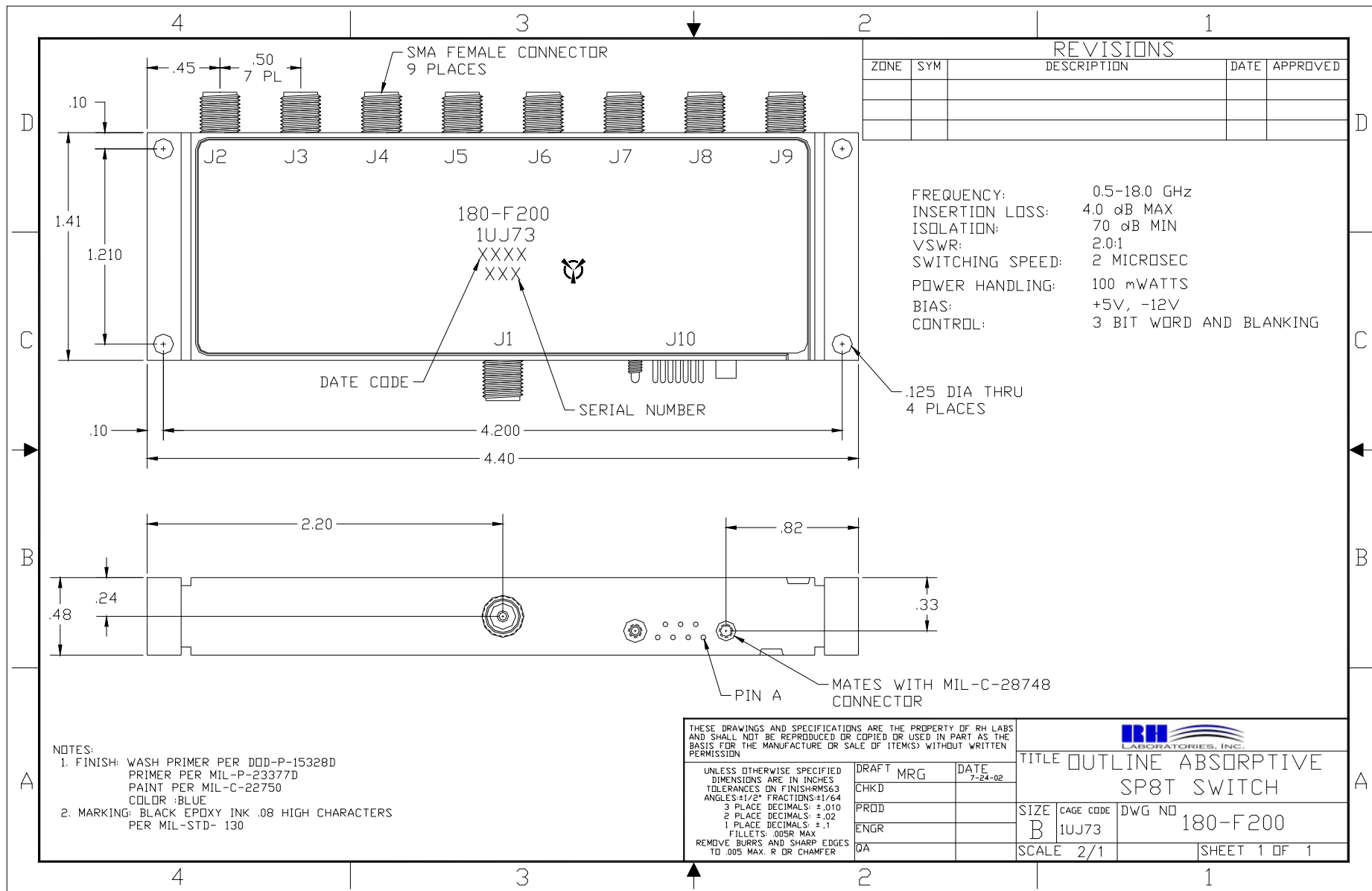
SIZE: B CAGE CODE: 1UJ73 DWG NO: 150-F203

SCALE: 2/1 SHEET 1 OF 1



One Tanguay Avenue
 Nashua, New Hampshire 03063-1711
 Phone: 603-459-5900 • Fax: 603-459-5901





One Tanguay Avenue
 Nashua, New Hampshire 03063-1711
 Phone: 603-459-5900 • Fax: 603-459-5901