

STANDARD ATTENUATORS CATALOG

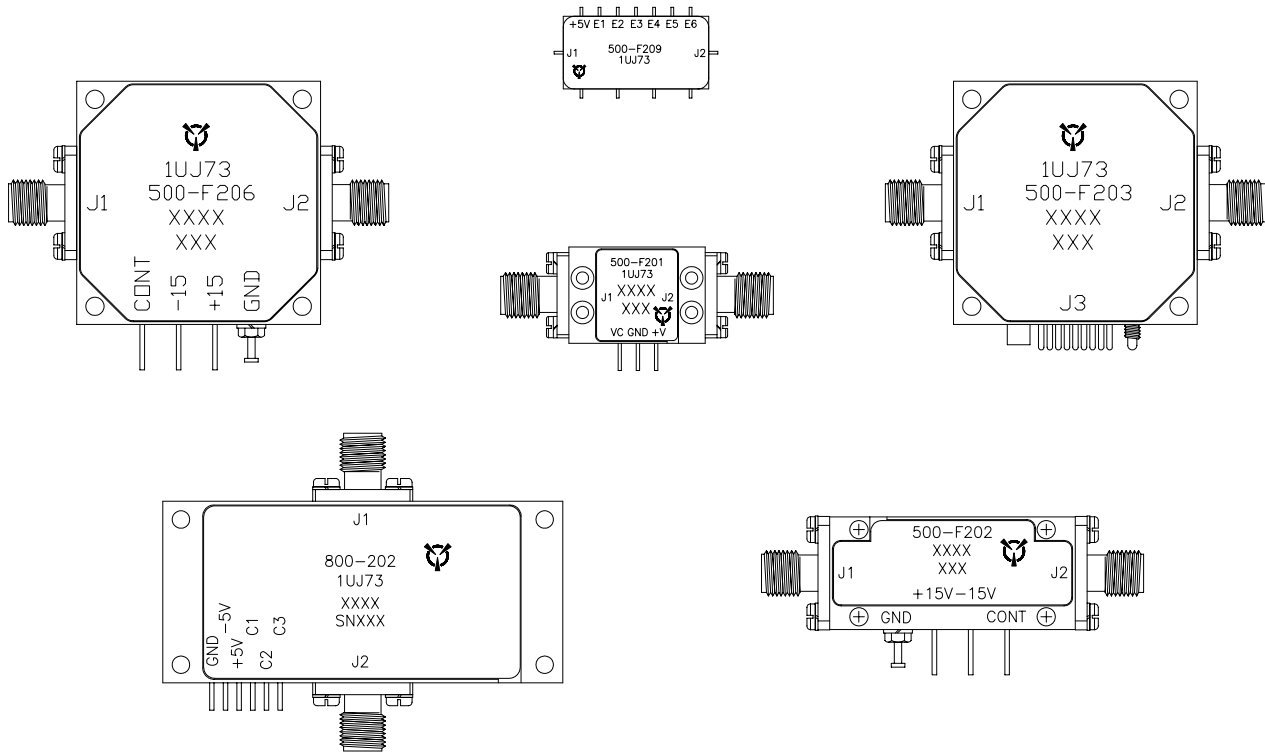
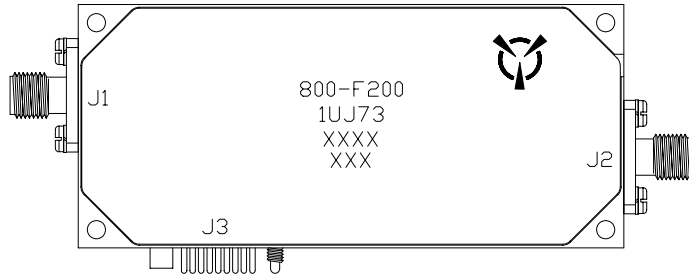
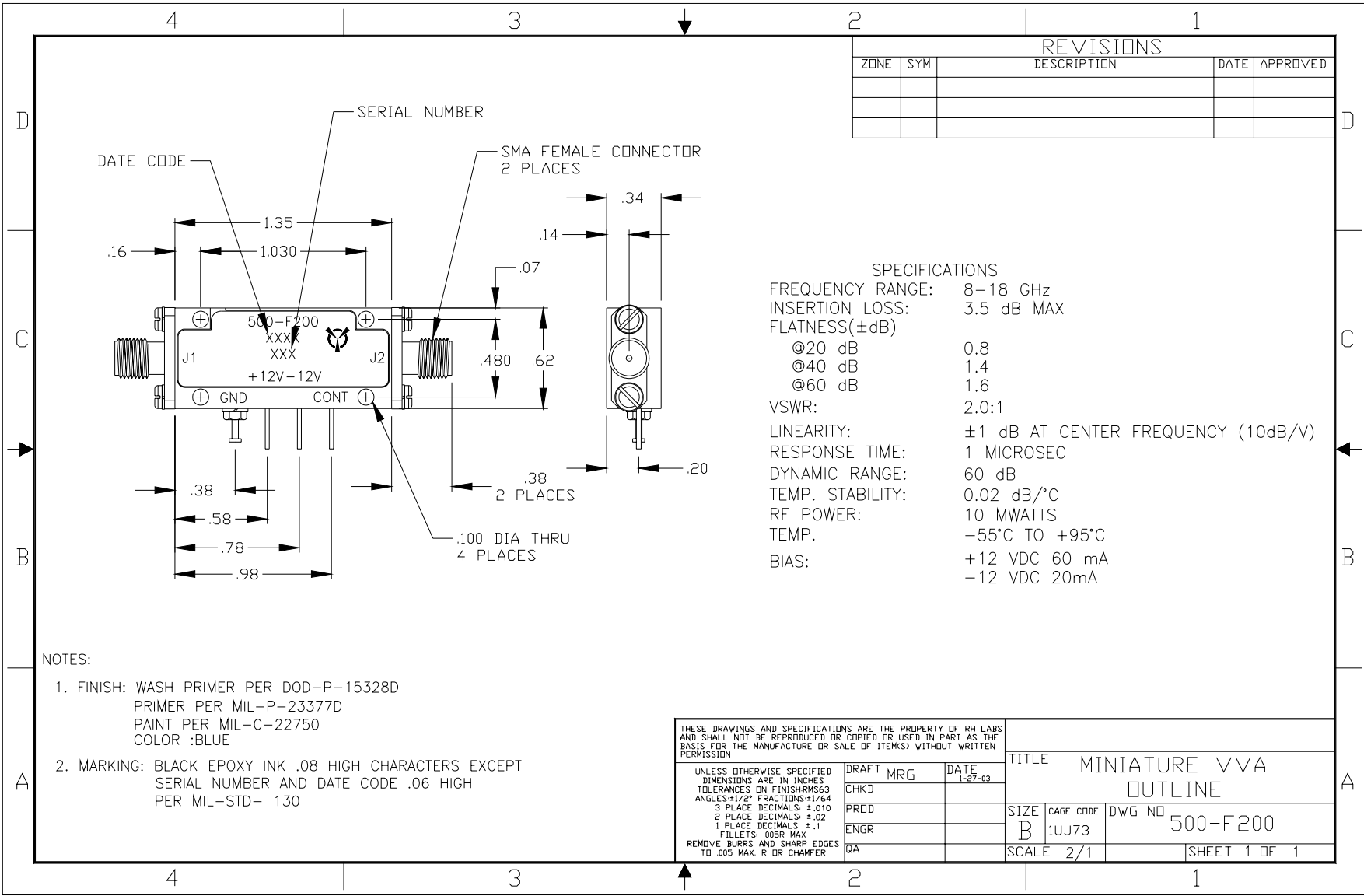


Table of content

Model Number	Function	Frequency Range	Dynamic Range	Page
500-F200	Miniature VVA	8–18 GHz	60 dB	3
500-F201	Ultra miniature VVA	12-18 GHz	50 dB	4
500-F202	Miniature VVA	6-18 GHz	60 dB	5
500-F203	Digital Attenuator	2-18 GHz	60 dB	6
500-F204	Digital Attenuator	0.5-8 GHz	60 dB	7
500-F205	Digital Attenuator	6-18 GHz	40 dB	8
500-F206	Attenuator	2-6 GHz	60 dB	9
500-F207	Attenuator	2-18 GHz	60 dB	10
500-F208	Miniature VVA	5-10 GHz	60 dB	11
500-F209	5 bit digital Attenuator	4-8 GHz	31 dB	12
800-F200	Programmable Attenuator	5-6 GHz	40dB	13
800-F201	6 bit switch pad attenuator	4-18 GHz	63 dB	14
800-F202	Broadband 3 bit Digital Attenuator	0.75-20 GHz	50dB	15
800-F202	Broadband 2 bit Digital Attenuator	0.75-20 GHz	50dB	16



REVISIONS				
ZONE	SYM	DESCRIPTION	DATE	APPROVED

SPECIFICATIONS

FREQUENCY RANGE:	8-18 GHz
INSERTION LOSS:	3.5 dB MAX
FLATNESS(±dB)	
@20 dB	0.8
@40 dB	1.4
@60 dB	1.6
VSWR:	2.0:1
LINEARITY:	±1 dB AT CENTER FREQUENCY (10dB/V)
RESPONSE TIME:	1 MICROSEC
DYNAMIC RANGE:	60 dB
TEMP. STABILITY:	0.02 dB/°C
RF POWER:	10 MWATTS
TEMP.	-55°C TO +95°C
BIAS:	+12 VDC 60 mA
	-12 VDC 20mA

- NOTES:
1. FINISH: WASH PRIMER PER DOD-P-15328D
PRIMER PER MIL-P-23377D
PAINT PER MIL-C-22750
COLOR :BLUE

2. MARKING: BLACK EPOXY INK .08 HIGH CHARACTERS EXCEPT
SERIAL NUMBER AND DATE CODE .06 HIGH
PER MIL-STD- 130

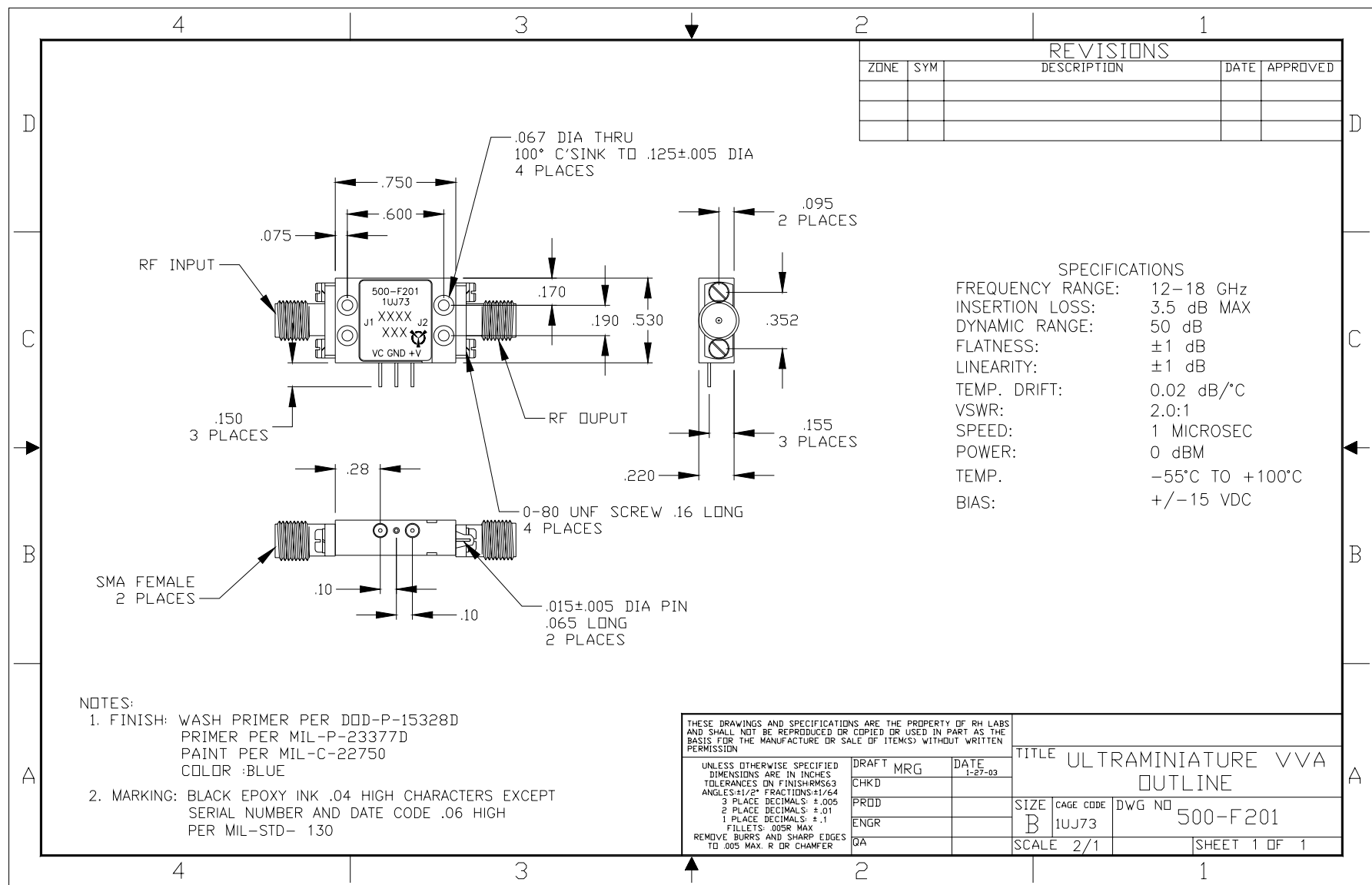
THESE DRAWINGS AND SPECIFICATIONS ARE THE PROPERTY OF RH LABS AND SHALL NOT BE REPRODUCED OR COPIED OR USED IN PART AS THE BASIS FOR THE MANUFACTURE OR SALE OF ITEMS WITHOUT WRITTEN PERMISSION

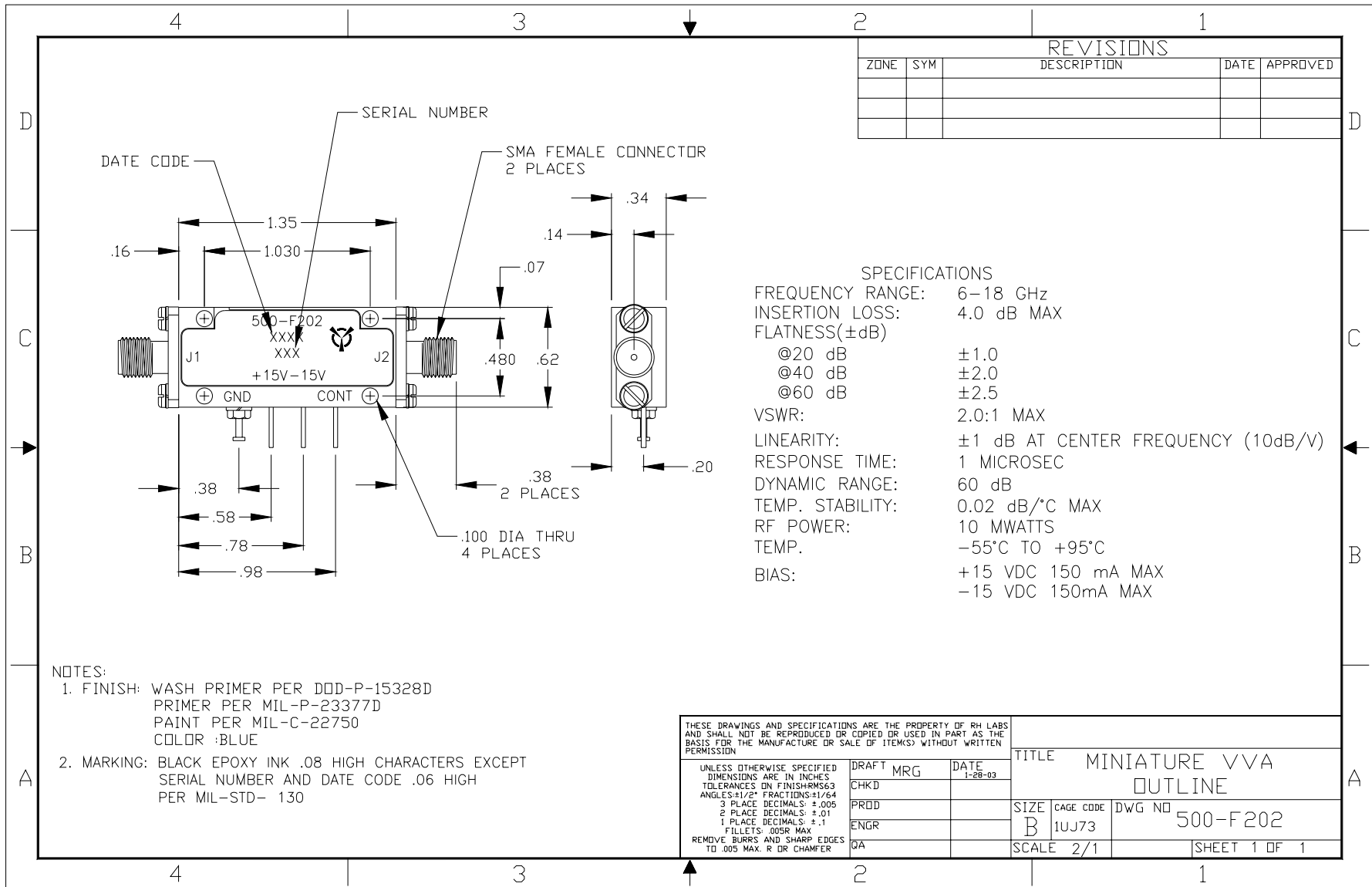
UNLESS OTHERWISE SPECIFIED
DIMENSIONS ARE IN INCHES
TOLERANCES ON FINISH: M53
ANGLES: 1/2° FRACTIONS: 1/64
3 PLACE DECIMALS: ±.010
2 PLACE DECIMALS: ±.02
1 PLACE DECIMALS: ±.1
FILLETS: .005R MAX
REMOVE BURRS AND SHARP EDGES
TO .005 MAX. R OR CHAMFER

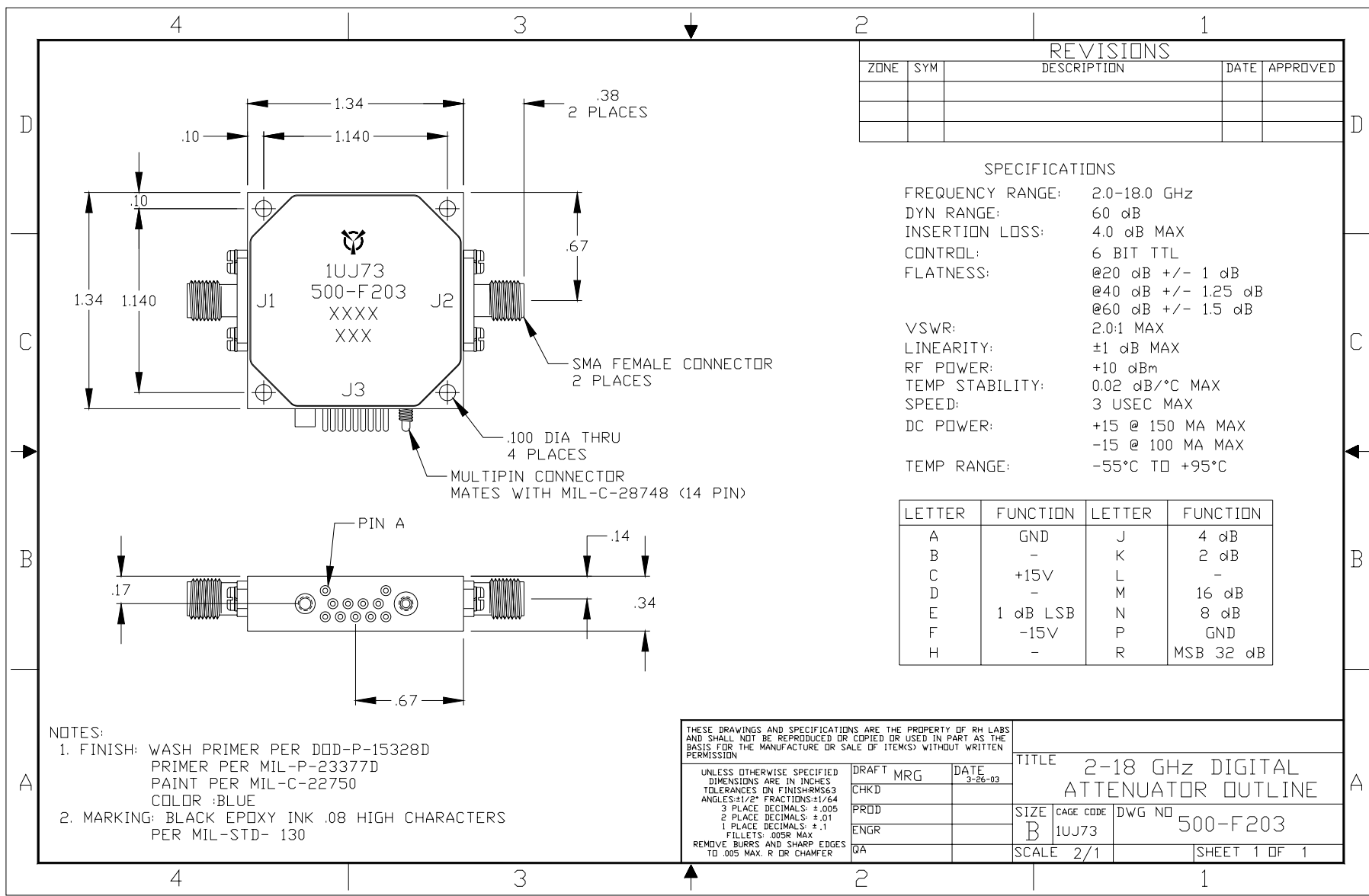
DRAFT		MRG	DATE	TITLE		
CHKD			1-27-03	MINIATURE VVA OUTLINE		
PROD				SIZE	CAGE CODE	DWG NO
ENGR				B	1UJ73	500-F200
QA				SCALE	2/1	SHEET 1 OF 1



One Tanguay Avenue
Nashua, New Hampshire 03063-1711
Phone: 603-459-5900 • Fax: 603-459-5901







REVISIONS				
ZONE	SYM	DESCRIPTION	DATE	APPROVED

SPECIFICATIONS

FREQUENCY RANGE: 2.0-18.0 GHz
 DYN RANGE: 60 dB
 INSERTION LOSS: 4.0 dB MAX
 CONTROL: 6 BIT TTL
 FLATNESS: @20 dB +/- 1 dB
 @40 dB +/- 1.25 dB
 @60 dB +/- 1.5 dB

VSWR: 2.0:1 MAX
 LINEARITY: ±1 dB MAX
 RF POWER: +10 dBm
 TEMP STABILITY: 0.02 dB/°C MAX
 SPEED: 3 USEC MAX

DC POWER: +15 @ 150 MA MAX
 -15 @ 100 MA MAX

TEMP RANGE: -55°C TO +95°C

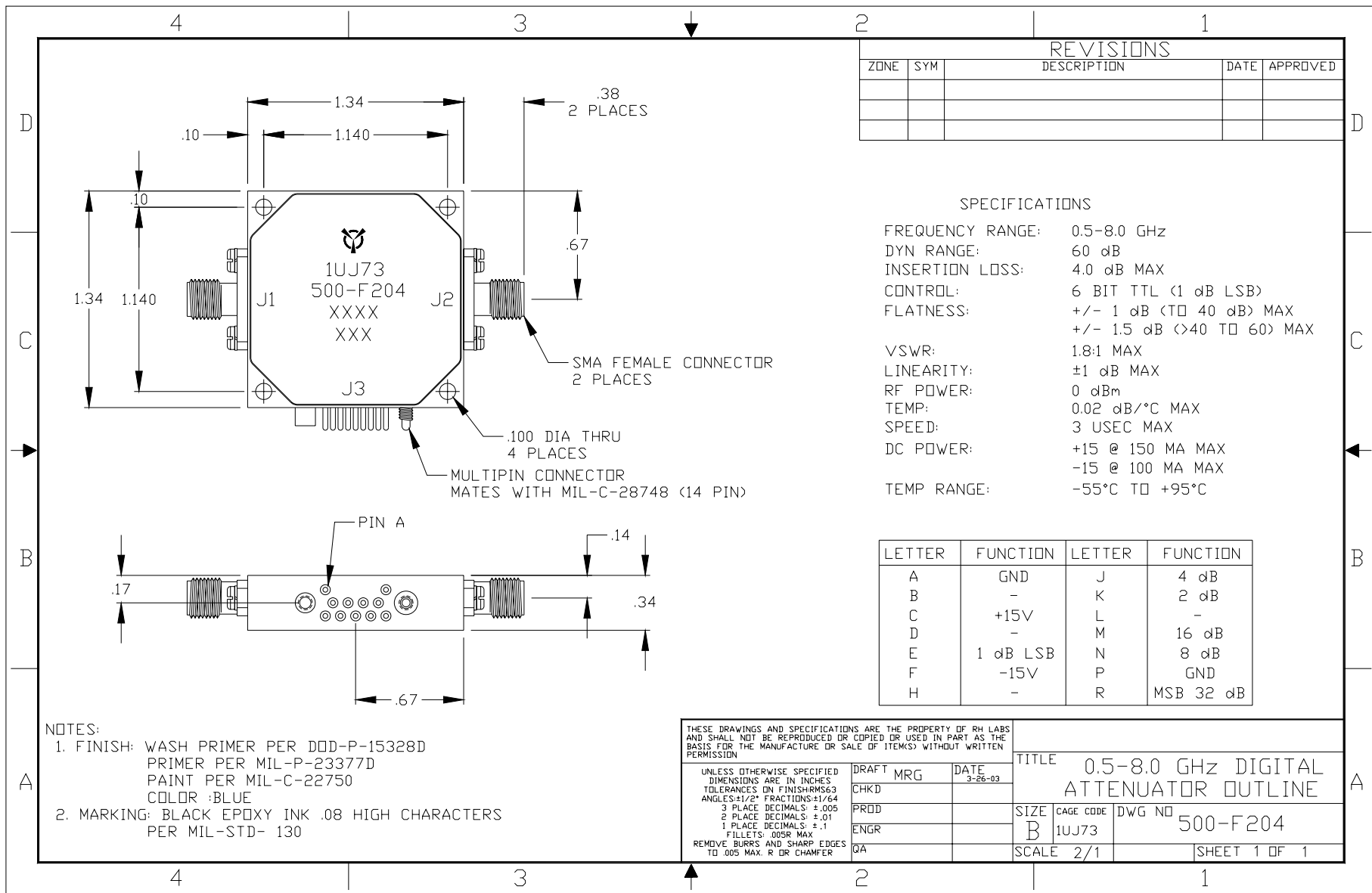
LETTER	FUNCTION	LETTER	FUNCTION
A	GND	J	4 dB
B	-	K	2 dB
C	+15V	L	-
D	-	M	16 dB
E	1 dB LSB	N	8 dB
F	-15V	P	GND
H	-	R	MSB 32 dB

- NOTES:
- FINISH: WASH PRIMER PER DDD-P-15328D
 PRIMER PER MIL-P-23377D
 PAINT PER MIL-C-22750
 COLOR :BLUE
 - MARKING: BLACK EPOXY INK .08 HIGH CHARACTERS
 PER MIL-STD- 130

<small>THESE DRAWINGS AND SPECIFICATIONS ARE THE PROPERTY OF RH LABS AND SHALL NOT BE REPRODUCED OR COPIED OR USED IN PART AS THE BASIS FOR THE MANUFACTURE OR SALE OF ITEMS WITHOUT WRITTEN PERMISSION</small>			TITLE 2-18 GHz DIGITAL ATTENUATOR OUTLINE	
<small>UNLESS OTHERWISE SPECIFIED DIMENSIONS ARE IN INCHES TOLERANCES ON FINISHES: ANGLES: 1/2° FRACTIONS: ±1/64 3 PLACE DECIMALS: ±.005 2 PLACE DECIMALS: ±.01 1 PLACE DECIMALS: ±.1 FILLETS: .005R MAX REMOVE BURRS AND SHARP EDGES TO .005 MAX. R OR CHAMFER</small>			DRAFT MRG DATE 3-26-03	SIZE B CAGE CODE 1UJ73 DWG NO 500-F203
PRDD	ENGR	QA	SCALE 2/1	SHEET 1 OF 1



One Tanguay Avenue
 Nashua, New Hampshire 03063-1711
 Phone: 603-459-5900 • Fax: 603-459-5901



REVISIONS				
ZONE	SYM	DESCRIPTION	DATE	APPROVED

SPECIFICATIONS

FREQUENCY RANGE: 0.5-8.0 GHz
 DYN RANGE: 60 dB
 INSERTION LOSS: 4.0 dB MAX
 CONTROL: 6 BIT TTL (<1 dB LSB)
 FLATNESS: +/- 1 dB (<40 dB) MAX
 +/- 1.5 dB (>40 TO 60) MAX

VSWR: 1.8:1 MAX
 LINEARITY: +/- 1 dB MAX
 RF POWER: 0 dBm
 TEMP: 0.02 dB/°C MAX
 SPEED: 3 USEC MAX

DC POWER: +15 @ 150 MA MAX
 -15 @ 100 MA MAX

TEMP RANGE: -55°C TO +95°C

LETTER	FUNCTION	LETTER	FUNCTION
A	GND	J	4 dB
B	-	K	2 dB
C	+15V	L	-
D	-	M	16 dB
E	1 dB LSB	N	8 dB
F	-15V	P	GND
H	-	R	MSB 32 dB

- NOTES:
- FINISH: WASH PRIMER PER DOD-P-15328D
 PRIMER PER MIL-P-23377D
 PAINT PER MIL-C-22750
 COLOR: BLUE
 - MARKING: BLACK EPOXY INK .08 HIGH CHARACTERS
 PER MIL-STD-130

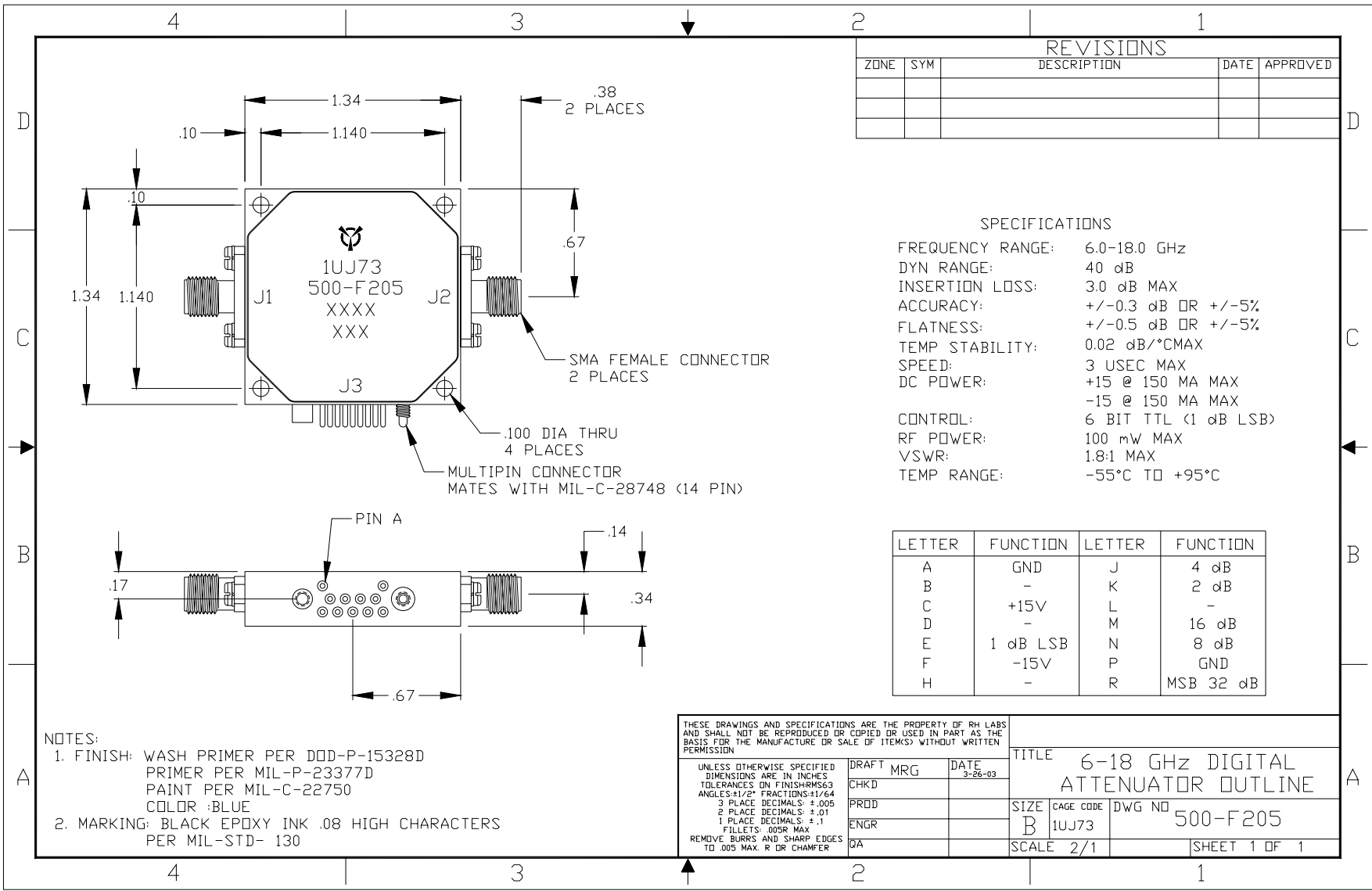
THESE DRAWINGS AND SPECIFICATIONS ARE THE PROPERTY OF RH LABS AND SHALL NOT BE REPRODUCED OR COPIED OR USED IN PART AS THE BASIS FOR THE MANUFACTURE OR SALE OF ITEMS) WITHOUT WRITTEN PERMISSION

UNLESS OTHERWISE SPECIFIED
 DIMENSIONS ARE IN INCHES
 TOLERANCES ON FINISH: RMS63
 ANGLES: 1/2" FRACTIONS: 1/64
 3 PLACE DECIMALS: ±.005
 2 PLACE DECIMALS: ±.01
 1 PLACE DECIMALS: ±.1
 FILLETS: .005R MAX
 REMOVE BURRS AND SHARP EDGES TO .005 MAX. R OR CHAMFER

DRAFT	MRG	DATE	3-26-03	TITLE		0.5-8.0 GHz DIGITAL ATTENUATOR OUTLINE	
CHKD				SIZE	CAGE CODE	DWG NO	500-F204
PRD				B	1UJ73		
ENGR				SCALE	2/1	SHEET	1 OF 1
QA							



One Tanguay Avenue
 Nashua, New Hampshire 03063-1711
 Phone: 603-459-5900 • Fax: 603-459-5901



REVISIONS				
ZONE	SYM	DESCRIPTION	DATE	APPROVED

SPECIFICATIONS

FREQUENCY RANGE: 6.0-18.0 GHz
 DYN RANGE: 40 dB
 INSERTION LOSS: 3.0 dB MAX
 ACCURACY: +/-0.3 dB OR +/-5%
 FLATNESS: +/-0.5 dB OR +/-5%
 TEMP STABILITY: 0.02 dB/°C MAX
 SPEED: 3 USEC MAX
 DC POWER: +15 @ 150 MA MAX
 -15 @ 150 MA MAX
 CONTROL: 6 BIT TTL (1 dB LSB)
 RF POWER: 100 mW MAX
 VSWR: 1.8:1 MAX
 TEMP RANGE: -55°C TO +95°C

LETTER	FUNCTION	LETTER	FUNCTION
A	GND	J	4 dB
B	-	K	2 dB
C	+15V	L	-
D	-	M	16 dB
E	1 dB LSB	N	8 dB
F	-15V	P	GND
H	-	R	MSB 32 dB

NOTES:

- FINISH: WASH PRIMER PER DOD-P-15328D
 PRIMER PER MIL-P-23377D
 PAINT PER MIL-C-22750
 COLOR :BLUE
- MARKING: BLACK EPOXY INK .08 HIGH CHARACTERS
 PER MIL-STD- 130

THESE DRAWINGS AND SPECIFICATIONS ARE THE PROPERTY OF RH LABS AND SHALL NOT BE REPRODUCED OR COPIED OR USED IN PART AS THE BASIS FOR THE MANUFACTURE OR SALE OF ITEMS WITHOUT WRITTEN PERMISSION

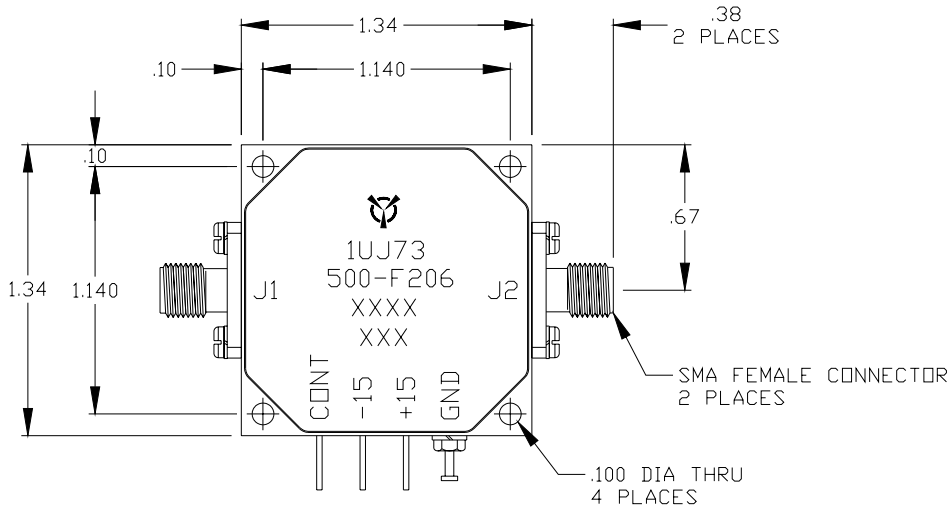
UNLESS OTHERWISE SPECIFIED DIMENSIONS ARE IN INCHES
 TOLERANCES ON FINISHES: .003
 ANGLES: 1/2° FRACTIONS: 1/64
 3 PLACE DECIMALS: ±.005
 2 PLACE DECIMALS: ±.01
 1 PLACE DECIMALS: ±.1
 FILLETS: .005R MAX
 REMOVE BURRS AND SHARP EDGES TO .005 MAX. R OR CHAMFER

DRAFT		MRG		DATE		3-26-03	
CHKD							
PRD							
ENGR							
QA							
TITLE				6-18 GHz DIGITAL ATTENUATOR OUTLINE			
SIZE		CAGE CODE		DWG NO			
B		1UJ73		500-F205			
SCALE				2/1		SHEET 1 OF 1	



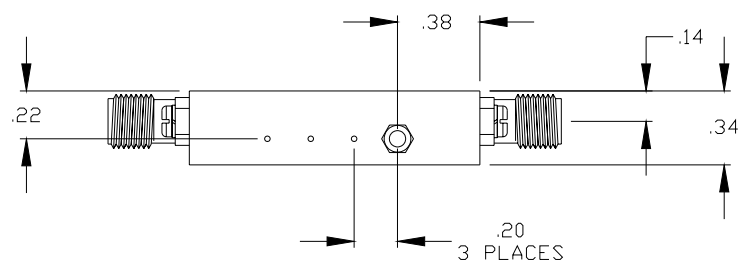
One Tanguay Avenue
 Nashua, New Hampshire 03063-1711
 Phone: 603-459-5900 • Fax: 603-459-5901

REVISIONS				
ZONE	SYM	DESCRIPTION	DATE	APPROVED



SPECIFICATIONS

FREQUENCY RANGE:	2.0-6.0 GHz
DYN RANGE:	60 dB
INSERTION LOSS:	2.5 dB MAX
FLATNESS:	+/-0.5 dB OR +/-4%
VSWR:	2.0:1 MAX
CONTROL VOLTAGE:	0 TO 10 VOLTS
INPUT IMPEDANCE:	10 K OHMS
LINEARITY:	+/- 1 dB MAX
SWITCHING TIME:	1.25 uSEC MAX
TEMP STABILITY:	0.02 dB/°C MAX
RF POWER:	0 dBM
DC POWER:	+15 @ 130 MA MAX -15 @ 50 MA MAX

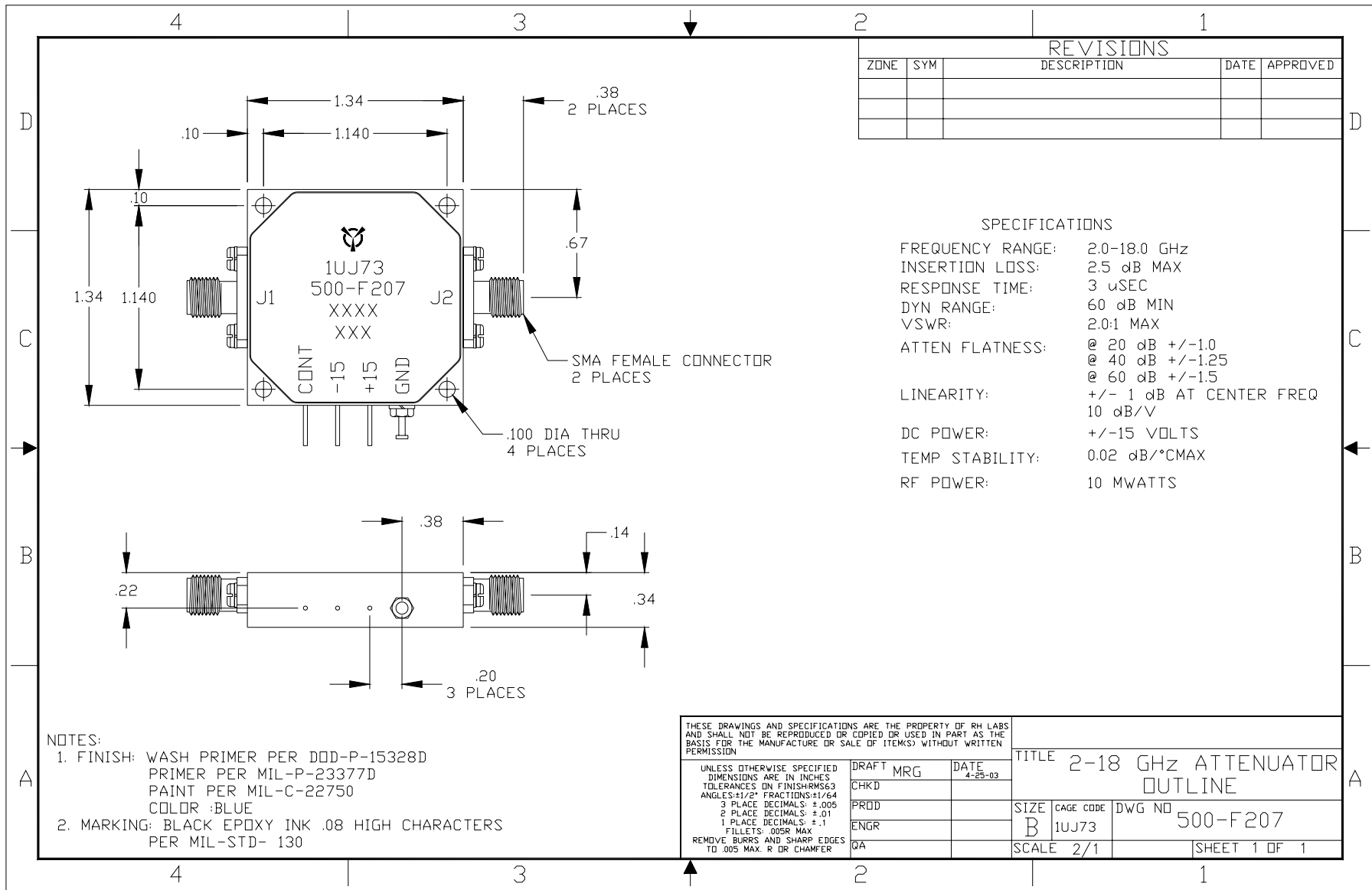


- NOTES:**
- FINISH: WASH PRIMER PER DOD-P-15328D
PRIMER PER MIL-P-23377D
PAINT PER MIL-C-22750
COLOR :BLUE
 - MARKING: BLACK EPOXY INK .08 HIGH CHARACTERS
PER MIL-STD- 130

THESE DRAWINGS AND SPECIFICATIONS ARE THE PROPERTY OF RH LABS AND SHALL NOT BE REPRODUCED OR COPIED OR USED IN PART AS THE BASIS FOR THE MANUFACTURE OR SALE OF ITEMS WITHOUT WRITTEN PERMISSION			TITLE 2-6 GHz ATTENUATOR OUTLINE	
UNLESS OTHERWISE SPECIFIED DIMENSIONS ARE IN INCHES TOLERANCES ON FINISHES: ANGLES: 1/2° FRACTIONS: 1/64 3 PLACE DECIMALS: ±.005 2 PLACE DECIMALS: ±.01 1 PLACE DECIMALS: ±.1 FILLETS: .005R MAX REMOVE BURRS AND SHARP EDGES TO .005 MAX. R OR CHAMFER	DRAFT MRG	DATE 4-25-03	SIZE B	CAGE CODE 1UJ73
	CHKD		DWG NO 500-F206	
	PRDD		SCALE 2/1	SHEET 1 OF 1
	ENGR			
	QA			



One Tanguay Avenue
Nashua, New Hampshire 03063-1711
Phone: 603-459-5900 • Fax: 603-459-5901



REVISIONS				
ZONE	SYM	DESCRIPTION	DATE	APPROVED

SPECIFICATIONS

FREQUENCY RANGE: 2.0-18.0 GHz
 INSERTION LOSS: 2.5 dB MAX
 RESPONSE TIME: 3 μSEC
 DYN RANGE: 60 dB MIN
 VSWR: 2.0:1 MAX
 ATTEN FLATNESS: @ 20 dB +/-1.0
 @ 40 dB +/-1.25
 @ 60 dB +/-1.5
 LINEARITY: +/- 1 dB AT CENTER FREQ
 10 dB/V
 DC POWER: +/-15 VOLTS
 TEMP STABILITY: 0.02 dB/°C MAX
 RF POWER: 10 MWATTS

NOTES:

- FINISH: WASH PRIMER PER DDD-P-15328D
 PRIMER PER MIL-P-23377D
 PAINT PER MIL-C-22750
 COLOR :BLUE
- MARKING: BLACK EPOXY INK .08 HIGH CHARACTERS
 PER MIL-STD- 130

THESE DRAWINGS AND SPECIFICATIONS ARE THE PROPERTY OF RH LABS AND SHALL NOT BE REPRODUCED OR COPIED OR USED IN PART AS THE BASIS FOR THE MANUFACTURE OR SALE OF ITEM(S) WITHOUT WRITTEN PERMISSION

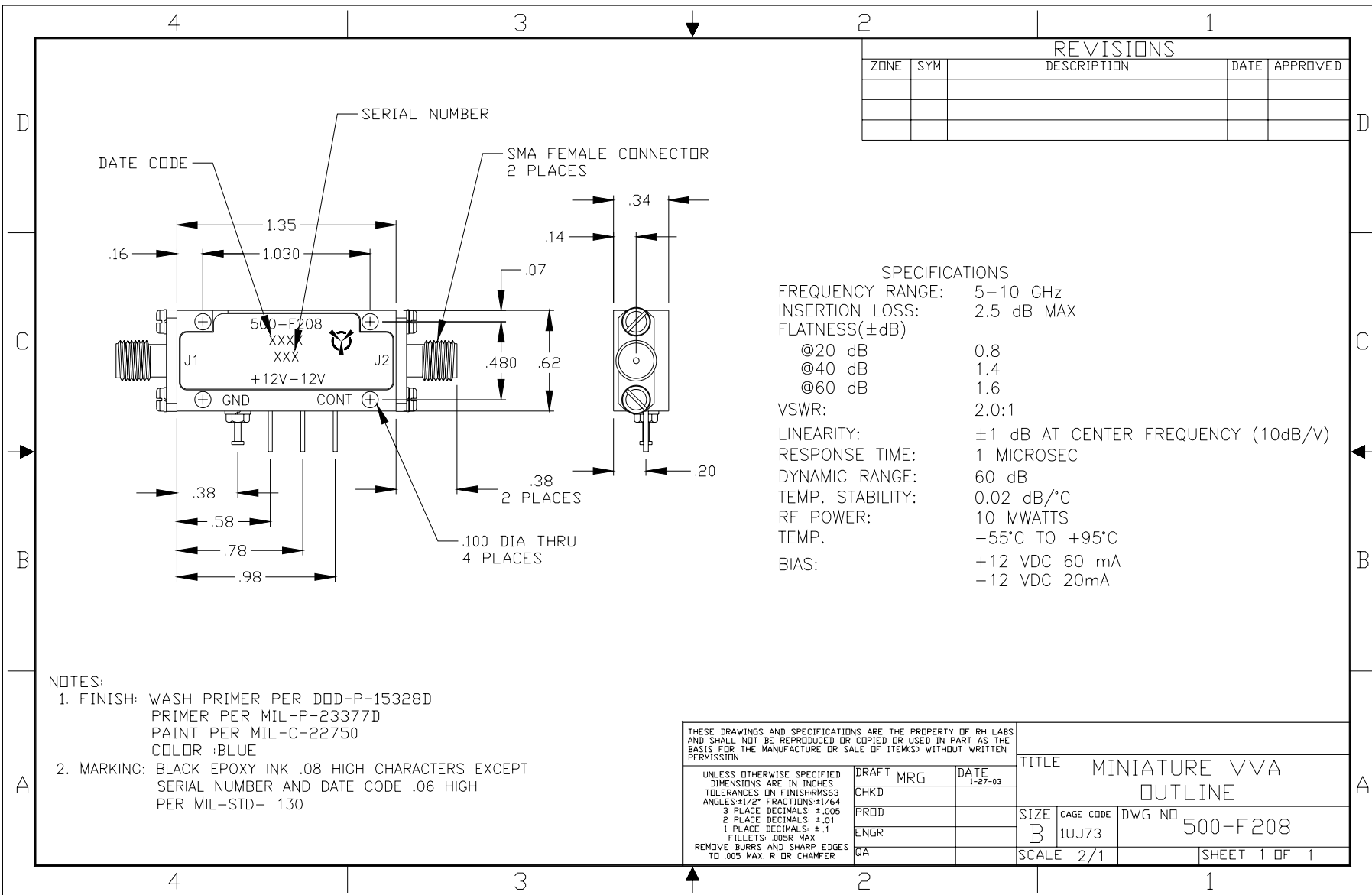
UNLESS OTHERWISE SPECIFIED
 DIMENSIONS ARE IN INCHES
 TOLERANCES ON FINISHES: .63
 ANGLES: 1/2° FRACTIONS: 1/64
 3 PLACE DECIMALS: ±.005
 2 PLACE DECIMALS: ±.01
 1 PLACE DECIMALS: ±.1
 FILLETS: .005R MAX
 REMOVE BURRS AND SHARP EDGES
 TO .005 MAX. R OR CHAMFER

DRAFT	MRG	DATE	4-25-03
CHKD			
PROD			
ENGR			
QA			

TITLE 2-18 GHz ATTENUATOR OUTLINE			
SIZE	CAGE CODE	DWG NO	
B	1UJ73	500-F207	
SCALE	2/1	SHEET	1 OF 1



One Tanguay Avenue
 Nashua, New Hampshire 03063-1711
 Phone: 603-459-5900 • Fax: 603-459-5901



REVISIONS				
ZONE	SYM	DESCRIPTION	DATE	APPROVED

SPECIFICATIONS

FREQUENCY RANGE: 5-10 GHz
 INSERTION LOSS: 2.5 dB MAX
 FLATNESS(±dB)
 @20 dB 0.8
 @40 dB 1.4
 @60 dB 1.6

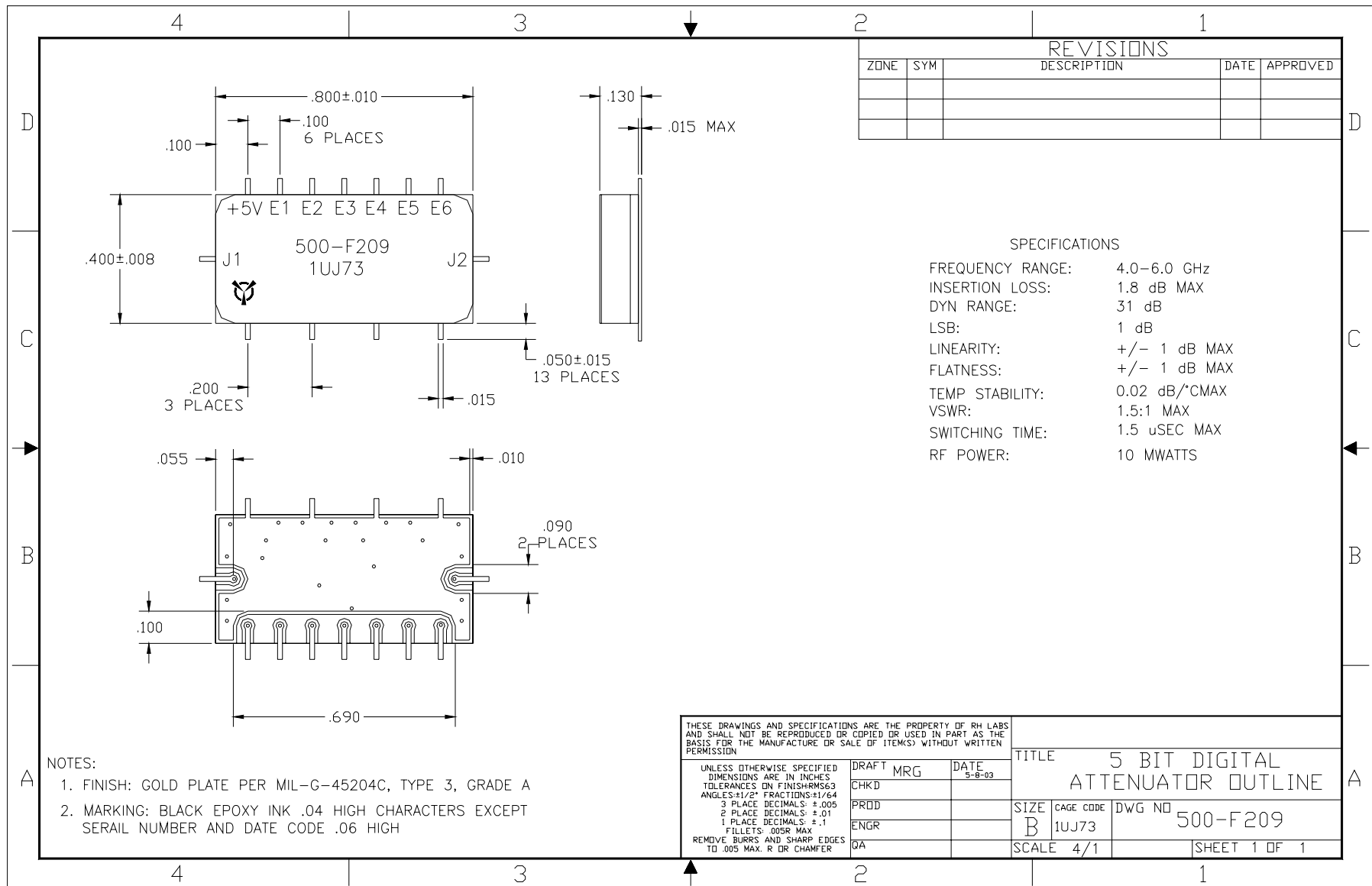
VSWR: 2.0:1
 LINEARITY: ±1 dB AT CENTER FREQUENCY (10dB/V)
 RESPONSE TIME: 1 MICROSEC
 DYNAMIC RANGE: 60 dB
 TEMP. STABILITY: 0.02 dB/°C
 RF POWER: 10 MWATTS
 TEMP. -55°C TO +95°C
 BIAS: +12 VDC 60 mA
 -12 VDC 20mA

- NOTES:**
- FINISH: WASH PRIMER PER DDD-P-15328D
 PRIMER PER MIL-P-23377D
 PAINT PER MIL-C-22750
 COLOR :BLUE
 - MARKING: BLACK EPOXY INK .08 HIGH CHARACTERS EXCEPT
 SERIAL NUMBER AND DATE CODE .06 HIGH
 PER MIL-STD- 130

<small>THESE DRAWINGS AND SPECIFICATIONS ARE THE PROPERTY OF RH LABS AND SHALL NOT BE REPRODUCED OR COPIED OR USED IN PART AS THE BASIS FOR THE MANUFACTURE OR SALE OF ITEMS WITHOUT WRITTEN PERMISSION</small>			TITLE MINIATURE VVA OUTLINE	
<small>UNLESS OTHERWISE SPECIFIED DIMENSIONS ARE IN INCHES TOLERANCES ON FINISHES: 63 ANGLES: ±1/2° FRACTIONS: ±1/64 3 PLACE DECIMALS: ±.005 2 PLACE DECIMALS: ±.01 1 PLACE DECIMALS: ±.1 FILLETS: .005R MAX REMOVE BURRS AND SHARP EDGES TO .005 MAX. R OR CHAMFER</small>	DRAFT MRG CHKD PRD ENGR QA	DATE 1-27-03	SIZE B CAGE CODE 1UJ73	DWG NO 500-F208
SCALE 2/1			SHEET 1 OF 1	



One Tanguay Avenue
 Nashua, New Hampshire 03063-1711
 Phone: 603-459-5900 • Fax: 603-459-5901



REVISIONS				
ZONE	SYM	DESCRIPTION	DATE	APPROVED

SPECIFICATIONS

FREQUENCY RANGE: 4.0-6.0 GHz
 INSERTION LOSS: 1.8 dB MAX
 DYN RANGE: 31 dB
 LSB: 1 dB
 LINEARITY: +/- 1 dB MAX
 FLATNESS: +/- 1 dB MAX
 TEMP STABILITY: 0.02 dB/°C MAX
 VSWR: 1.5:1 MAX
 SWITCHING TIME: 1.5 μSEC MAX
 RF POWER: 10 MWATTS

- NOTES:
1. FINISH: GOLD PLATE PER MIL-G-45204C, TYPE 3, GRADE A
 2. MARKING: BLACK EPOXY INK .04 HIGH CHARACTERS EXCEPT SERIAL NUMBER AND DATE CODE .06 HIGH

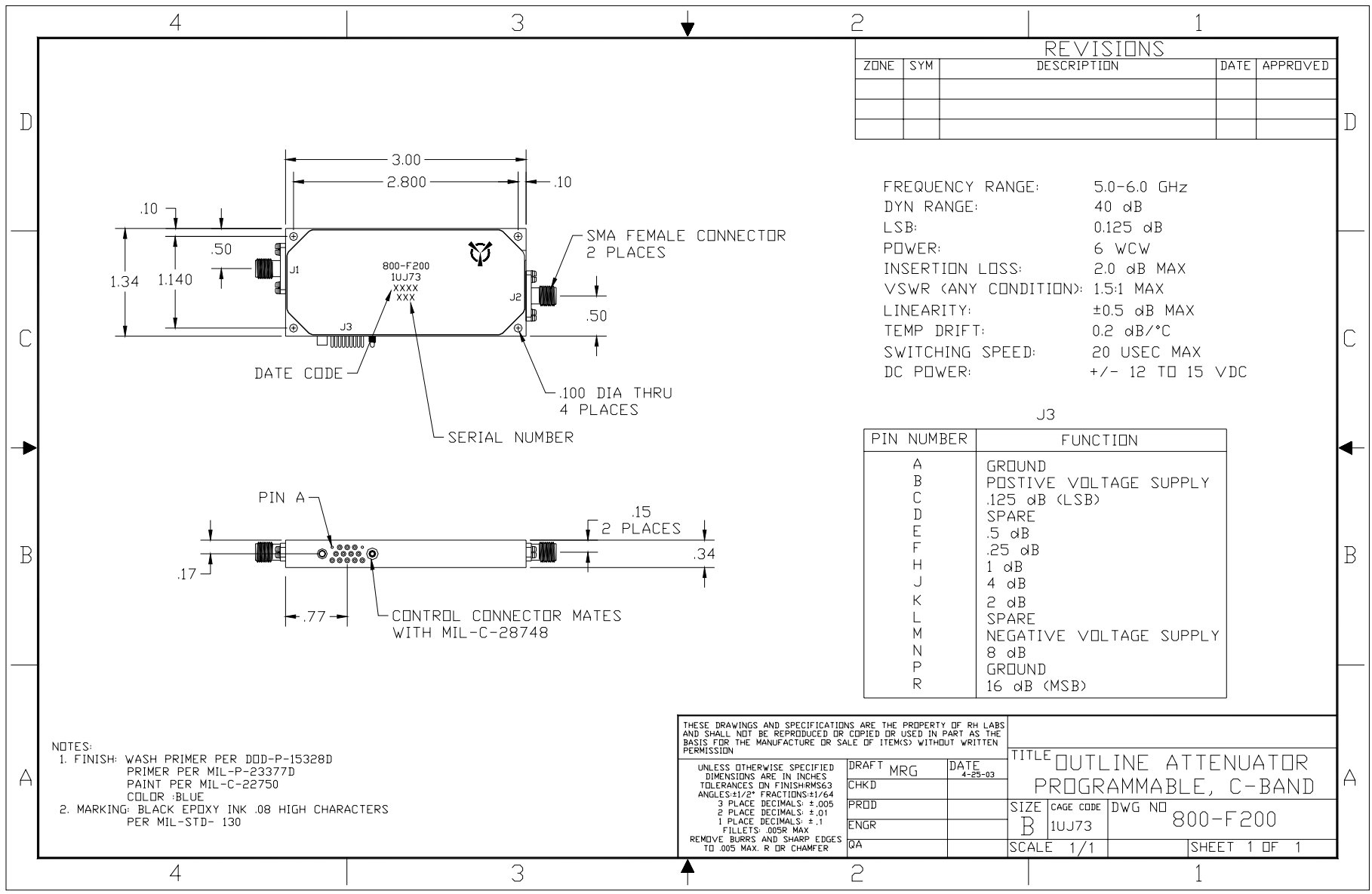
THESE DRAWINGS AND SPECIFICATIONS ARE THE PROPERTY OF RH LABS AND SHALL NOT BE REPRODUCED OR COPIED OR USED IN PART AS THE BASIS FOR THE MANUFACTURE OR SALE OF ITEM(S) WITHOUT WRITTEN PERMISSION

UNLESS OTHERWISE SPECIFIED DIMENSIONS ARE IN INCHES
 TOLERANCES IN FINISH-RMS&3
 ANGLES=1/2° FRACTIONS=1/64
 3 PLACE DECIMALS: ±.005
 2 PLACE DECIMALS: ±.01
 1 PLACE DECIMALS: ±.1
 FILLETS: .005R MAX
 REMOVE BURRS AND SHARP EDGES TO .005 MAX. R OR CHAMFER

DRAFT		DATE		TITLE	
MRG	CHKD	5-8-03		5 BIT DIGITAL ATTENUATOR OUTLINE	
PRDD				SIZE	CAGE CODE
ENGR				B	1UJ73
QA				DWG NO	500-F209
				SCALE	4/1
					SHEET 1 OF 1



One Tanguay Avenue
 Nashua, New Hampshire 03063-1711
 Phone: 603-459-5900 • Fax: 603-459-5901



REVISIONS				
ZONE	SYM	DESCRIPTION	DATE	APPROVED

FREQUENCY RANGE: 5.0-6.0 GHz
 DYN RANGE: 40 dB
 LSB: 0.125 dB
 POWER: 6 W CW
 INSERTION LOSS: 2.0 dB MAX
 VSWR (ANY CONDITION): 1.5:1 MAX
 LINEARITY: ±0.5 dB MAX
 TEMP DRIFT: 0.2 dB/°C
 SWITCHING SPEED: 20 USEC MAX
 DC POWER: +/- 12 TO 15 VDC

J3

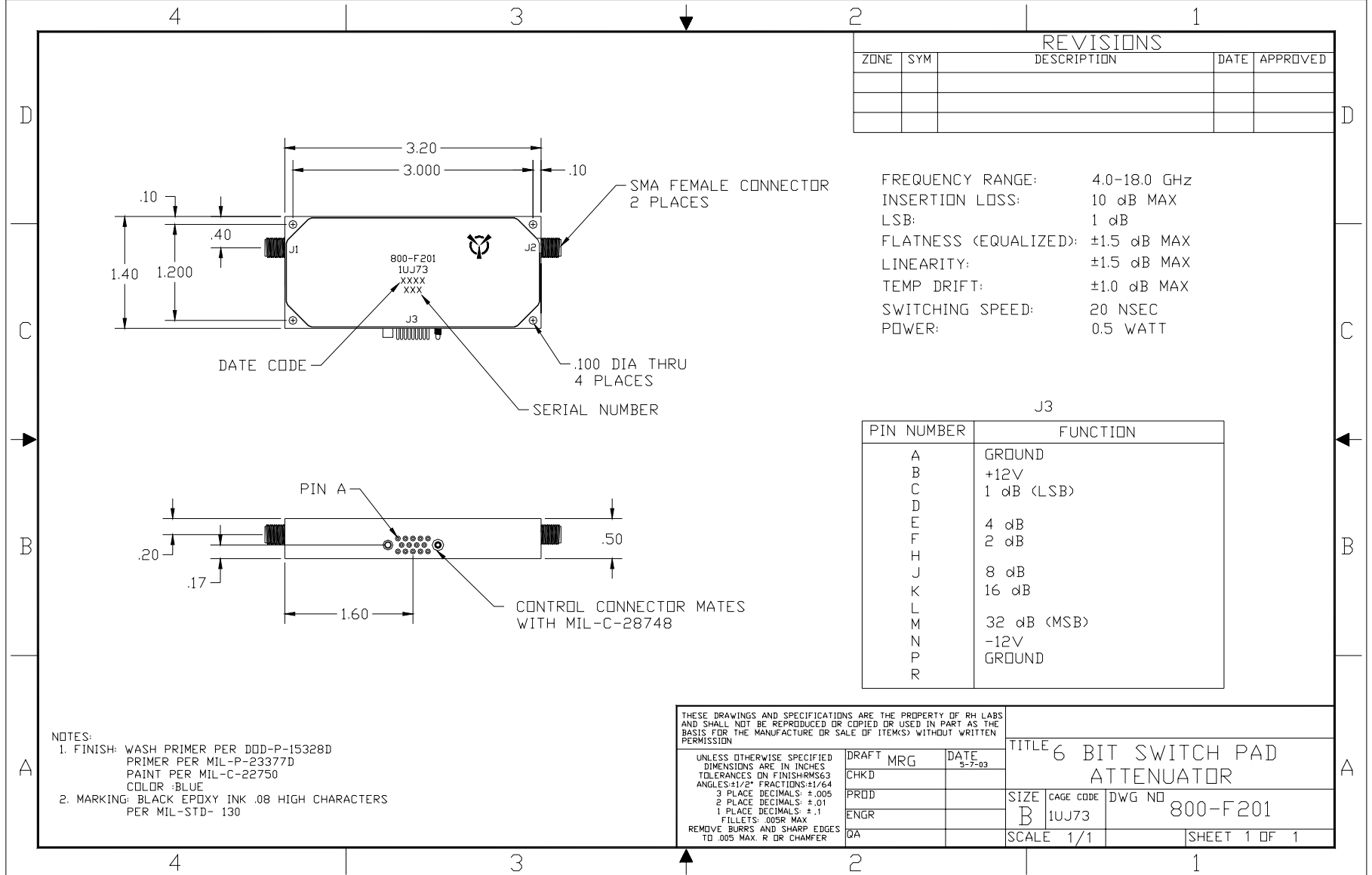
PIN NUMBER	FUNCTION
A	GROUND
B	POSTIVE VOLTAGE SUPPLY
C	.125 dB (LSB)
D	SPARE
E	.5 dB
F	.25 dB
H	1 dB
J	4 dB
K	2 dB
L	SPARE
M	NEGATIVE VOLTAGE SUPPLY
N	8 dB
P	GROUND
R	16 dB (MSB)

NOTES:
 1. FINISH: WASH PRIMER PER DDD-P-15328D
 PRIMER PER MIL-P-23377D
 PAINT PER MIL-C-22750
 COLOR :BLUE
 2. MARKING: BLACK EPOXY INK .08 HIGH CHARACTERS
 PER MIL-STD- 130

THESE DRAWINGS AND SPECIFICATIONS ARE THE PROPERTY OF RH LABS AND SHALL NOT BE REPRODUCED OR COPIED OR USED IN PART AS THE BASIS FOR THE MANUFACTURE OR SALE OF ITEM(S) WITHOUT WRITTEN PERMISSION		TITLE OUTLINE ATTENUATOR PROGRAMMABLE, C-BAND	
UNLESS OTHERWISE SPECIFIED DIMENSIONS ARE IN INCHES TOLERANCES ON FINISHES: 63 ANGLES: 1/2° FRACTIONS: ±1/64 3 PLACE DECIMALS: ±.005 2 PLACE DECIMALS: ±.01 1 PLACE DECIMALS: ±.1 FILLETS: .005R MAX REMOVE BURRS AND SHARP EDGES TO .005 MAX. R OR CHAMFER	DRAFT MRG CHKD PRDD ENGR QA	DATE 4-25-03	SIZE B CAGE CODE 1UJ73 SCALE 1/1
		DWG NO 800-F200	SHEET 1 OF 1



One Tanguay Avenue
 Nashua, New Hampshire 03063-1711
 Phone: 603-459-5900 • Fax: 603-459-5901



REVISIONS				
ZONE	SYM	DESCRIPTION	DATE	APPROVED

FREQUENCY RANGE: 4.0-18.0 GHz
 INSERTION LOSS: 10 dB MAX
 LSB: 1 dB
 FLATNESS (EQUALIZED): ±1.5 dB MAX
 LINEARITY: ±1.5 dB MAX
 TEMP DRIFT: ±1.0 dB MAX
 SWITCHING SPEED: 20 NSEC
 POWER: 0.5 WATT

J3	
PIN NUMBER	FUNCTION
A	GROUND
B	+12V
C	1 dB (LSB)
D	
E	4 dB
F	2 dB
H	
J	8 dB
K	16 dB
L	
M	32 dB (MSB)
N	-12V
P	GROUND
R	

NOTES:
 1. FINISH: WASH PRIMER PER DDD-P-15328D
 PRIMER PER MIL-P-23377D
 PAINT PER MIL-C-22750
 COLOR :BLUE
 2. MARKING: BLACK EPOXY INK .08 HIGH CHARACTERS
 PER MIL-STD- 130

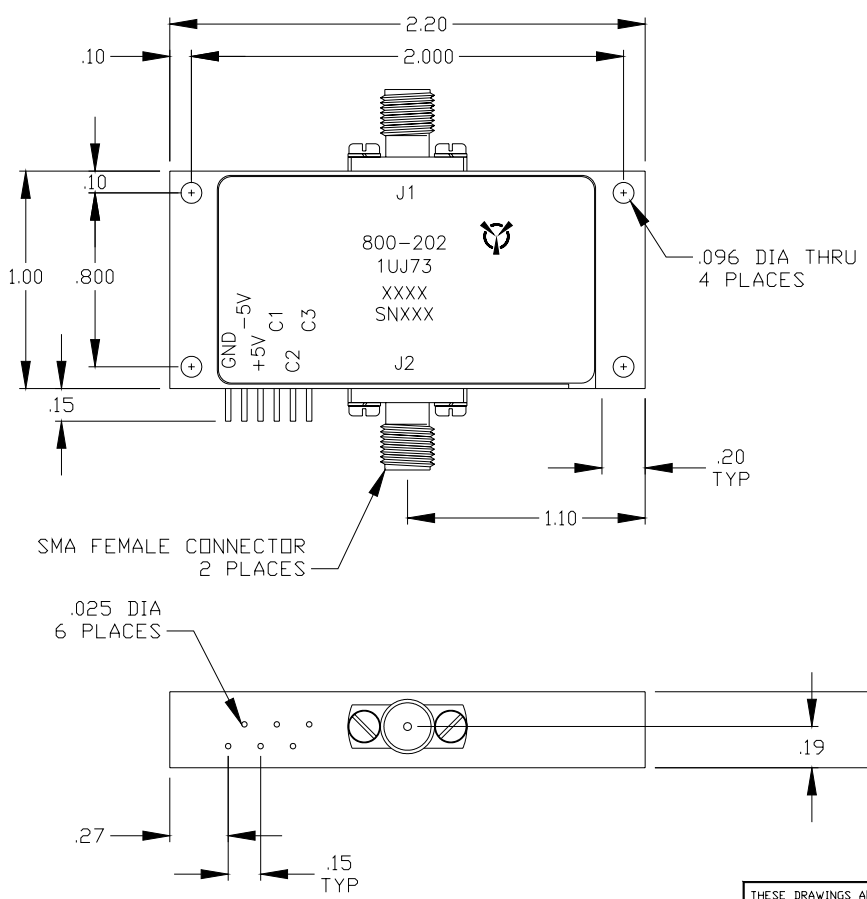
THESE DRAWINGS AND SPECIFICATIONS ARE THE PROPERTY OF RH LABS AND SHALL NOT BE REPRODUCED OR COPIED OR USED IN PART AS THE BASIS FOR THE MANUFACTURE OR SALE OF ITEM(S) WITHOUT WRITTEN PERMISSION
 UNLESS OTHERWISE SPECIFIED DIMENSIONS ARE IN INCHES
 TOLERANCES ON FINISHES: M563
 ANGLES: ±1/2° FRACTIONS: 1/64
 3 PLACE DECIMALS: ±.005
 2 PLACE DECIMALS: ±.01
 1 PLACE DECIMALS: ±.1
 FILLETS: .005R MAX
 REMOVE BURRS AND SHARP EDGES TO .005 MAX. R OR CHAMFER

DRAFT MRG			DATE 3-7-03			TITLE 6 BIT SWITCH PAD ATTENUATOR		
CHKD						SIZE B	CAGE CODE 1UJ73	DWG NO 800-F201
PRD						SCALE 1/1	SHEET 1 OF 1	
ENGR								
QA								



One Tanguay Avenue
 Nashua, New Hampshire 03063-1711
 Phone: 603-459-5900 • Fax: 603-459-5901

REVISIONS				
ZONE	SYM	DESCRIPTION	DATE	APPROVED



SPECIFICATIONS

FREQUENCY	0.75-20.0 GHz
INSERTION LOSS	6 dB (0.8-18 GHz) 7.0 dB (18-20 GHz)
VSWR	2.0:1
FLATNESS (WITH RESPECT TO REFERENCE PATH)	±1 dB FOR 10,20 dB PADS ±1.5 dB FOR 30,40,50 dB PAD
FLATNESS WITH FREQUENCY	3 dB PK TO PK (STATE 0 0)
SPEED	100 nsec
POWER	1 WATT CW
DC	±5 VDC (±180 mA)
LOGIC (REF)	0 0 0
(10 dB)	0 0 1
(20 dB)	0 1 0
(30 dB)	0 1 1
(40 dB)	1 0 0
(50 dB)	1 0 1

SMA FEMALE CONNECTOR
2 PLACES

.025 DIA
6 PLACES

- NOTES:
1. FINISH: WASH PRIMER PER DOD-P-15328D
PRIMER PER MIL-P-23377D
PAINT PER MIL-C-22750
COLOR :BLUE
 2. MARKING: BLACK EPOXY INK .06 HIGH CHARACTERS PER MIL-STD-130

THESE DRAWINGS AND SPECIFICATIONS ARE THE PROPERTY OF RH LABS AND SHALL NOT BE REPRODUCED OR COPIED OR USED IN PART AS THE BASIS FOR THE MANUFACTURE OR SALE OF ITEM(S) WITHOUT WRITTEN PERMISSION

UNLESS OTHERWISE SPECIFIED
DIMENSIONS ARE IN INCHES
TOLERANCES: ON FINISH RMS63
ANGLES: ±1/2° FRACTIONS: 1/64
3 PLACE DECIMALS: ±.005
2 PLACE DECIMALS: ±.01
1 PLACE DECIMALS: ±.1
FILLET: .005R MAX
REMOVE BURRS AND SHARP EDGES TO .005 MAX. R OR CHAMFER

DRAFT	MRG	DATE	9-21-01
CHKD			
PRD			
ENGR			
QA			

TITLE			BROADBAND 3 BIT DIGITAL ATTENUATOR OUTLINE		
SIZE	CAGE CODE	DWG NO			
B	1UJ73	800-F202			
SCALE	2/1		SHEET 1 OF 1		



One Tanguay Avenue
Nashua, New Hampshire 03063-1711
Phone: 603-459-5900 • Fax: 603-459-5901

