

4

3

2

1

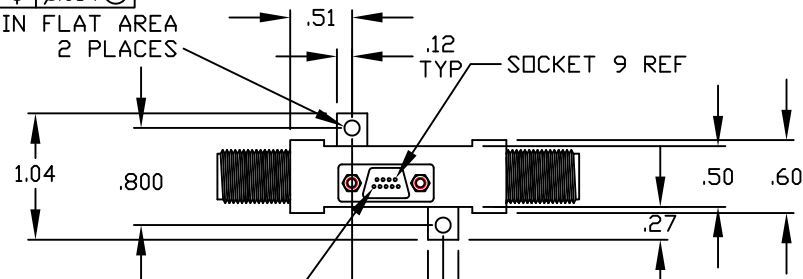
REVISIONS

ZONE	SYM	DESCRIPTION	DATE	APPROVED

.123-.128 DIA THRU

$\varnothing .014 \text{ M}$

.224 MIN FLAT AREA
2 PLACES



SOCKET 1 REF

SOCKET 9 REF

TNC FEMALE
3 PLACES

M83513/02-AN WITH
M83513/5-07 HARDWARE

1.06

.66

.800

2.03

$\square .005$

.60
3 PLACES

.28

1.78

.25

.30

.12

PAINT FREE
MOUNTING SURFACE

SPECIFICATIONS

- FREQUENCY: 6-18 GHz
- ISOLATION: 25-30dB MIN.
- INSERTION LOSS: 2.0dB MAX (1.5 dB MAX. GOAL)
- VSWR: 2.0:1
- PHASE TRACKING: $\pm 5^\circ$
- SWITCHING SPEED: 1 MICRO SEC
- POWER: 100 WCW (ABSORPTIVE SECTION WILL HANDLE 10 WCW MAX.)
- MOUNTING TEMP: 50°C
- LOAD VSWR: 1.5:1 MAX.
- BIAS: +28V, -5V, +5V

THESE DRAWINGS AND SPECIFICATIONS ARE THE PROPERTY OF RH LABS AND SHALL NOT BE REPRODUCED OR COPIED OR USED IN PART AS THE BASIS FOR THE MANUFACTURE OR SALE OF ITEM(S) WITHOUT WRITTEN PERMISSION

UNLESS OTHERWISE SPECIFIED
DIMENSIONS ARE IN INCHES
TOLERANCES ON FINISHES: M63
ANGLES: $\pm 1/2^\circ$ FRACTIONS: $\pm 1/64$
3 PLACE DECIMALS: $\pm .010$
2 PLACE DECIMALS: $\pm .02$
1 PLACE DECIMALS: $\pm .1$
FILLET: .005R MAX
REMOVE BURRS AND SHARP EDGES TO .005 MAX. R OR CHAMFER

DRAFT	MRG	DATE	9-25-02
CHKD			
PROD			
ENGR			
QA			

TITLE		OUTLINE SPDT SWITCH	
SIZE	CAGE CODE	DWG NO	120-F208
B	1UJ73		
SCALE	1/1	SHEET 1 OF 1	

4

3

2

1

D

D

C

C

B

B

A

A